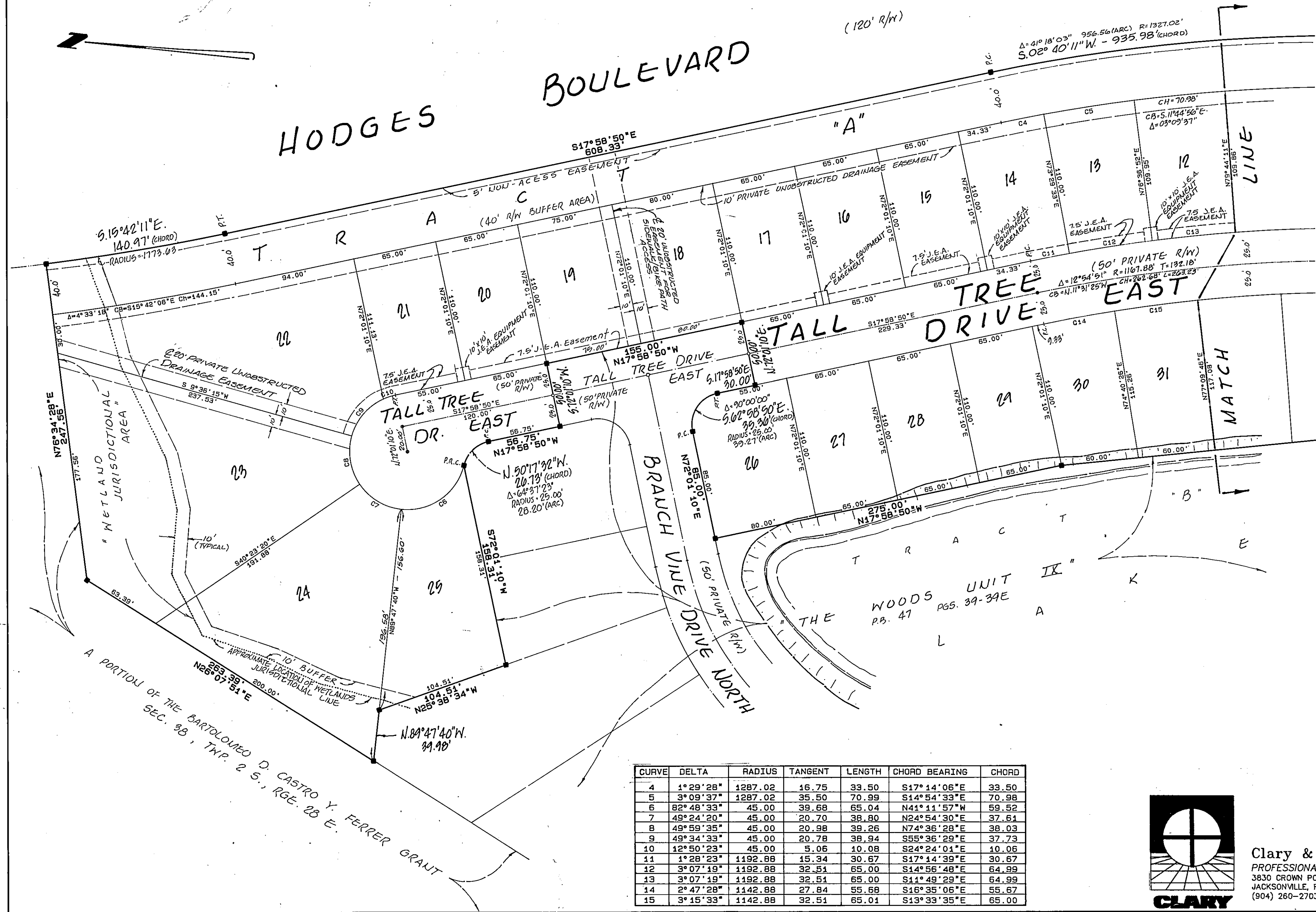
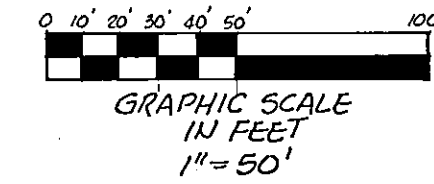


# THE WOODS UNIT IX A

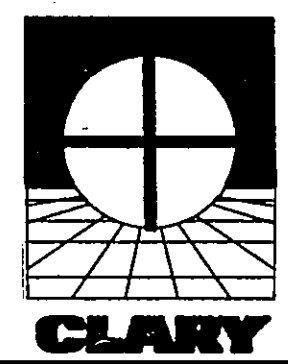
CITY OF JACKSONVILLE, DUVAL COUNTY, FLORIDA

PLAT BOOK 49 PAGE 930

SHEET 4 OF 4



CURVE	DELTA	RADIUS	TANGENT	LENGTH	CHORD BEARING	CHORD
4	1° 29' 28"	1287.02	16.75	33.50	S17° 14' 06" E	33.50
5	3° 09' 37"	1287.02	35.50	70.99	S14° 54' 33" E	70.98
6	82° 48' 33"	45.00	39.68	65.04	N41° 11' 57" W	59.52
7	49° 24' 20"	45.00	20.70	38.80	N24° 54' 30" E	37.61
8	49° 59' 35"	45.00	20.98	39.26	N74° 36' 28" E	38.03
9	49° 34' 33"	45.00	20.78	38.94	S55° 36' 29" E	37.73
10	12° 50' 23"	45.00	5.06	10.08	S24° 24' 04" E	10.06
11	1° 28' 23"	1192.88	15.34	30.67	S17° 14' 39" E	30.67
12	3° 07' 19"	1192.88	32.51	65.00	S14° 56' 48" E	64.99
13	3° 07' 19"	1192.88	32.51	65.00	S14° 49' 29" E	64.99
14	2° 47' 28"	1142.88	27.84	55.68	S16° 35' 06" E	55.67
15	3° 15' 33"	1142.88	32.51	65.01	S13° 33' 35" E	65.00



Clary & Associates, Inc.  
 PROFESSIONAL LAND SURVEYORS  
 3830 CROWN POINT ROAD  
 JACKSONVILLE, FLORIDA 32217  
 (904) 260-2703

P.S. D. #91-021  
 CITY DEVELOPMENT No. 599-1