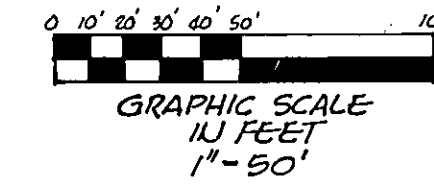


THE WOODS UNIT IX A

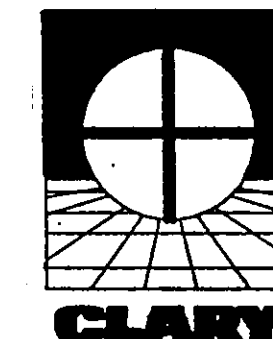
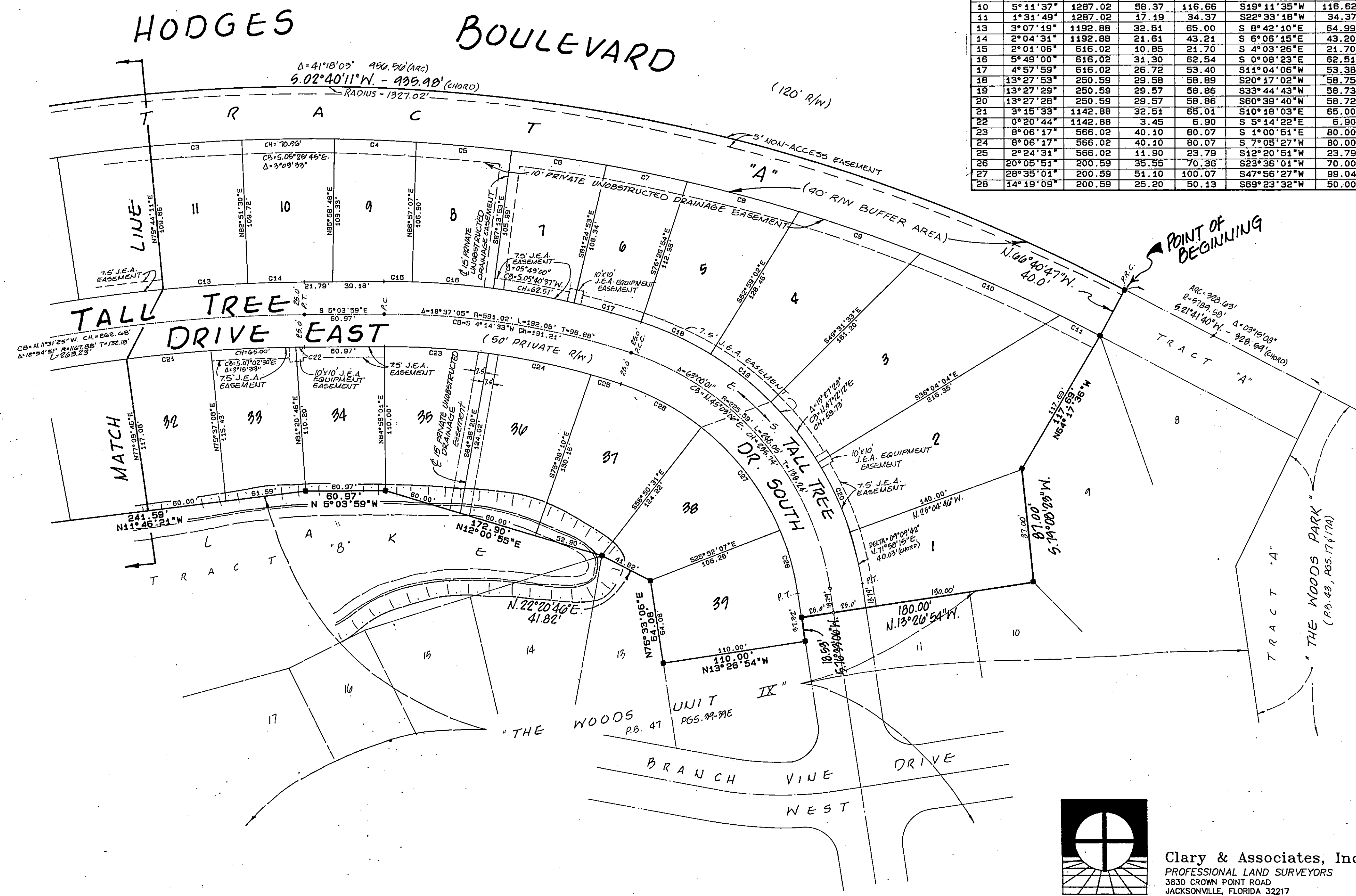
PLAT BOOK 49 PAGE 93B

SHEET 3 OF 4

CITY OF JACKSONVILLE, DUVAL COUNTY, FLORIDA



CURVE	DELTA	RADIUS	TANGENT	LENGTH	CHORD BEARING	CHORD
3	3°09'36"	1287.02	35.50	70.98	S 8°35'20"E	70.97
4	2°47'31"	1287.02	31.36	62.71	S 2°27'13"E	62.71
5	3°15'52"	1287.02	36.67	73.33	S 0°34'28"W	73.32
6	3°16'09"	1287.02	36.73	73.43	S 3°50'29"W	73.42
7	2°48'40"	1287.02	31.58	63.14	S 6°52'53"W	63.14
8	3°56'11"	1287.02	44.23	88.42	S10°15'18"W	88.41
9	4°22'23"	1287.02	49.14	98.23	S14°24'35"W	98.20
10	5°11'37"	1287.02	58.37	116.66	S19°11'35"W	116.62
11	1°31'49"	1287.02	17.19	34.37	S22°33'18"W	34.37
13	3°07'19"	1192.88	32.51	65.00	S 8°42'10"E	64.99
14	2°04'31"	1192.88	21.61	43.21	S 6°06'45"E	43.20
15	2°01'06"	616.02	10.85	21.70	S 4°03'26"E	21.70
16	5°49'00"	616.02	31.30	62.54	S 0°08'23"E	62.51
17	4°57'59"	616.02	26.72	53.40	S14°04'06"W	53.38
18	13°27'53"	250.59	29.58	58.89	S20°47'02"W	58.75
19	13°27'29"	250.59	29.57	58.86	S33°44'43"W	58.73
20	13°27'28"	250.59	29.57	58.86	S60°39'40"W	58.72
21	3°15'33"	1142.88	32.51	65.01	S10°18'03"E	65.00
22	0°20'44"	1142.88	3.45	6.90	S 5°14'22"E	6.90
23	8°06'17"	566.02	40.10	80.07	S 1°00'51"E	80.00
24	8°06'17"	566.02	40.10	80.07	S 7°05'27"W	80.00
25	2°24'31"	566.02	11.90	23.79	S12°20'51"W	23.79
26	20°05'51"	200.59	35.55	70.36	S23°36'04"W	70.00
27	28°35'01"	200.59	51.10	100.07	S47°56'27"W	99.04
28	14°19'09"	200.59	25.20	50.13	S69°23'32"W	50.00



Clary & Associates, Inc.
PROFESSIONAL LAND SURVEYORS
3830 CROWN POINT ROAD
JACKSONVILLE, FLORIDA 32217
(904) 260-2703