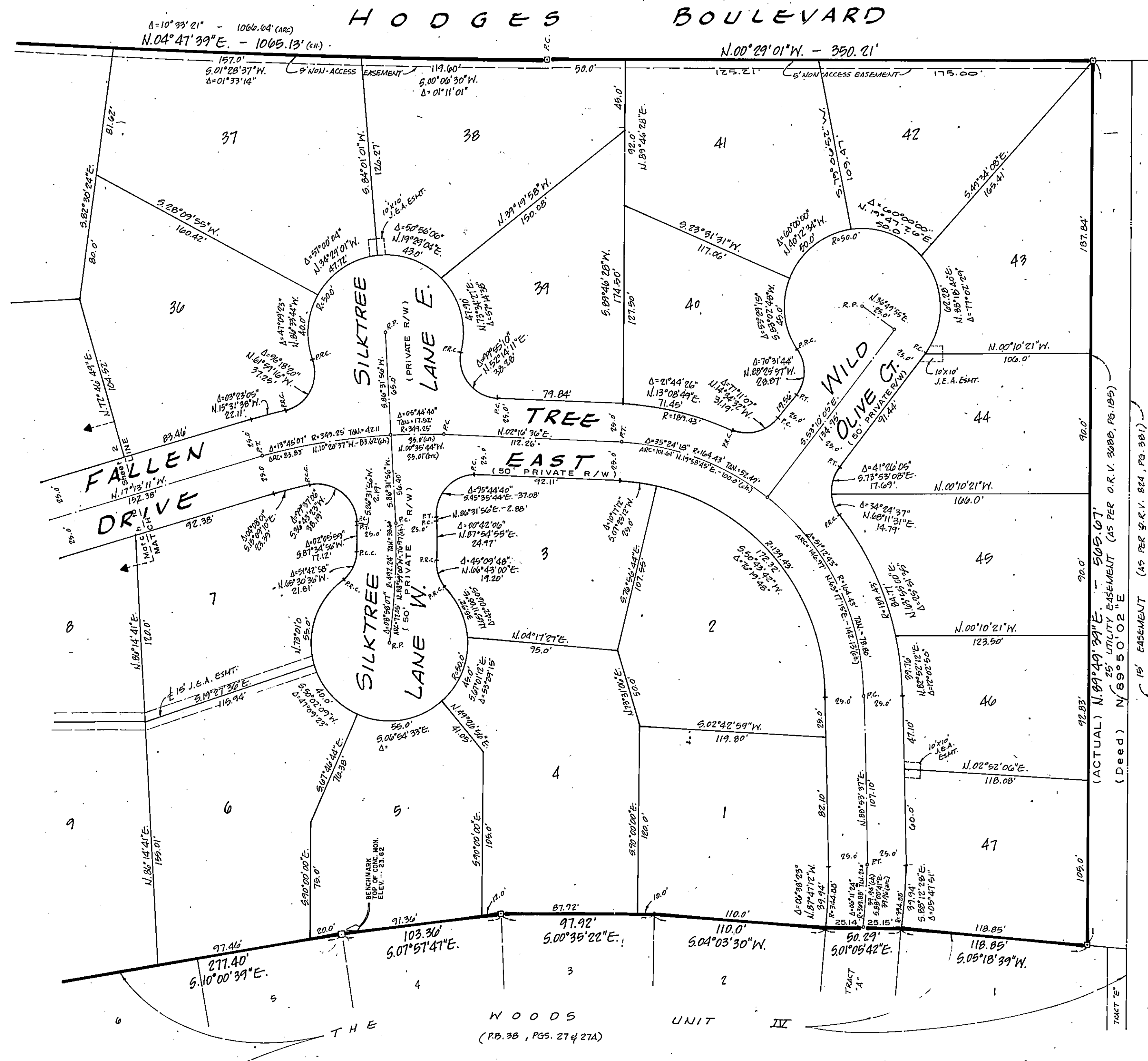
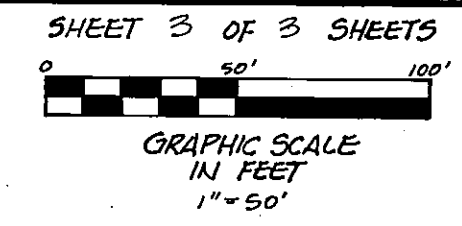


THE WOODS UNIT VII

CITY OF JACKSONVILLE
DUVAL COUNTY, FLORIDA

PLAT BOOK 44 PAGE 16 B



- ***** GENERAL NOTES *****
- 1) Bearings shown hereon are based on the plat of THE WOODS PARK, City of Jacksonville, Duval County, Florida, as recorded in Plat Book 42, pages 17 and 17 A, of the current public records of said County.
 - 2) Easements shown hereon are for Drainage, Utilities, and Sewer and are private, however certain easements shown hereon, are reserved for the exclusive use of the Jacksonville Electric Authority in conjunction with the underground electrical distribution system, and are shown as J.E.A. Easements hereon.
 - 3) The minimum Building Restriction Lines for the lots shown on this plat are as follows, according to the current Zoning Regulations:
 - a) FRONT - 25 feet
 - b) REAR - 10 feet
 - c) SIDES - 7.5 feet
- However there may be additional Restrictions that are not recorded on this plat, that may be found in the current public records of Duval County Florida.
- 4) All of the land shown hereon is situated in Flood Zone "C" as shown on the Federal Emergency Management Agency National Flood Insurance Program, Flood Insurance Rate Map, Community Panel No. 120077 0245 D, dated December 15, 1983.
 - 5) Elevations shown hereon are based on U.S. Coastal and Geodetic Survey Datum, National Vertical Datum of 1929.
 - 6) The Curve Table shown on each sheet is applicable to that sheet on which it appears only, and not to any other sheet contained in this Plat.
 - 7) Denotes Permanent Reference Monument
 - 8) Denotes Permanent Control Point
 - 9) All radii are 25.0 feet, unless otherwise noted hereon.

