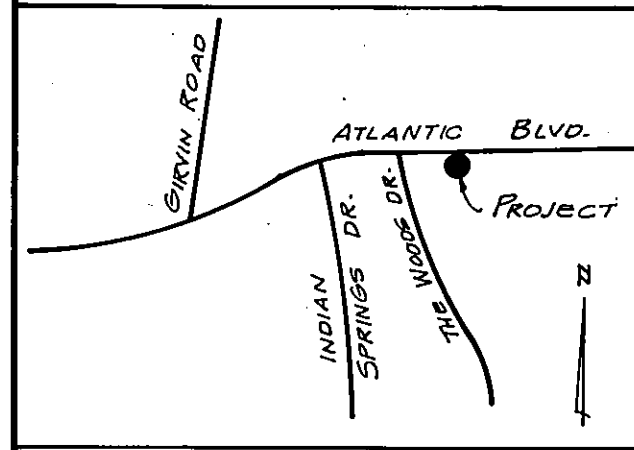
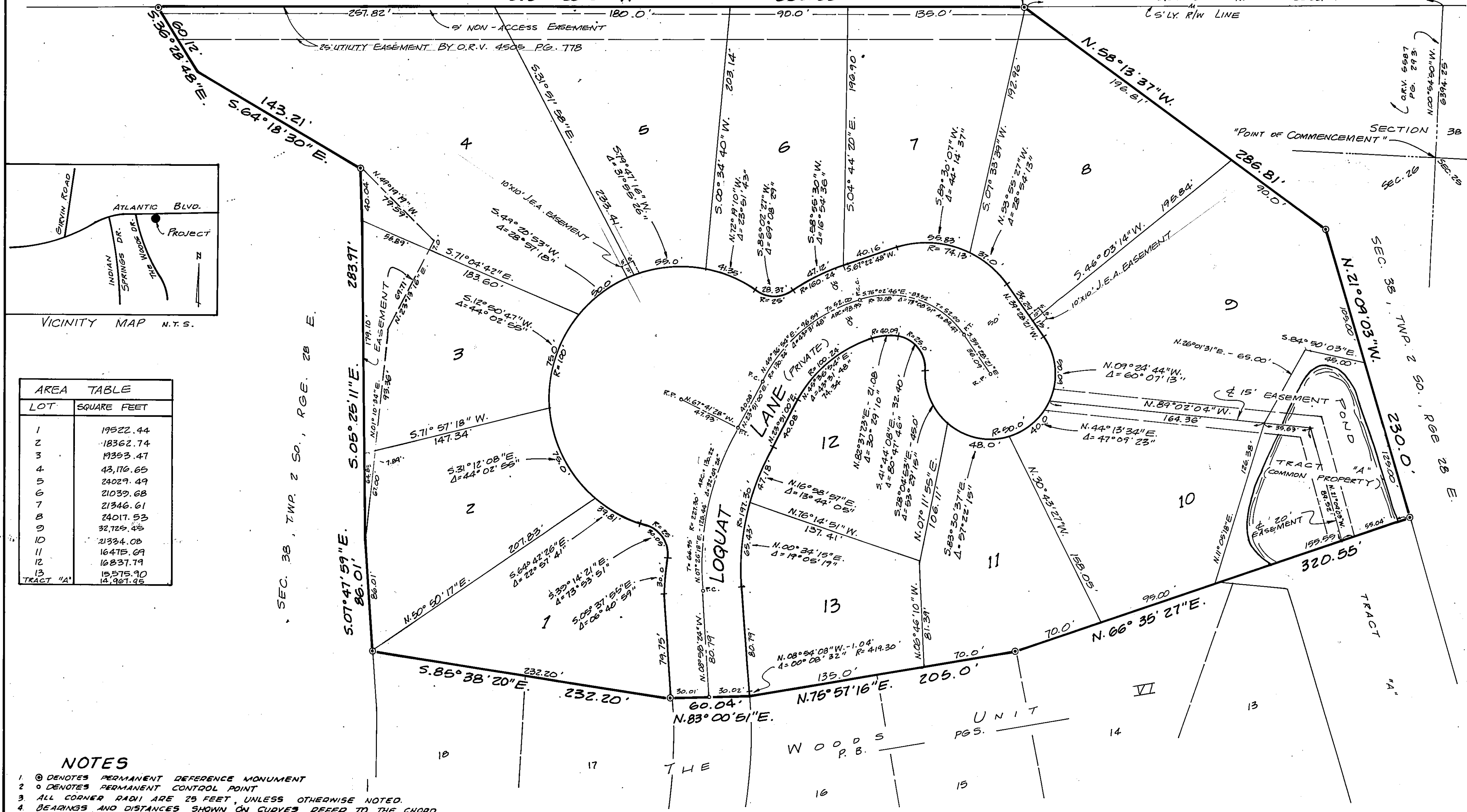
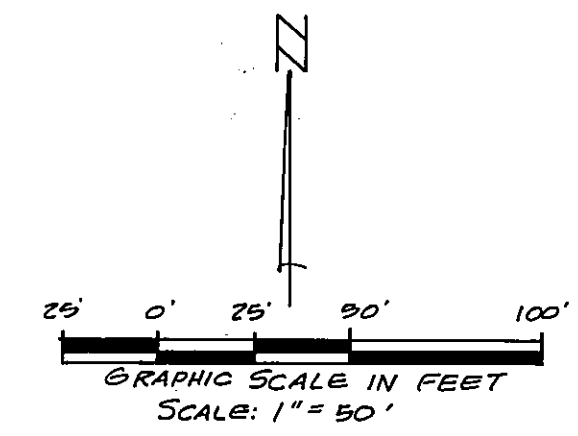


THE WOODS UNIT VI-A

CITY OF JACKSONVILLE

DUVAL COUNTY, FLORIDA

ATLANTIC (185' R/W) BOULEVARD



AREA TABLE	
LOT	SQUARE FEET
1	19522.44
2	18362.74
3	19353.47
4	43,176.65
5	24029.49
6	21039.68
7	21346.61
8	24017.53
9	32,725.45
10	21324.08
11	16475.09
12	16837.79
13	15,575.90
TRACT "A"	13,961.95

- NOTES**
- ⊙ DENOTES PERMANENT REFERENCE MONUMENT
 - DENOTES PERMANENT CONTROL POINT
 - ALL CORNER RADII ARE 25 FEET, UNLESS OTHERWISE NOTED.
 - BEARINGS AND DISTANCES SHOWN ON CURVES REFER TO THE CHORD
 - EASEMENTS SHOWN HEREON ARE FOR DRAINAGE, UTILITIES AND SEWERS AND ARE PRIVATE EXCEPT THOSE DESIGNATED AS J.E.A. EASEMENTS
 - BEARINGS BASE ON THE SOUTHERLY R/W LINE OF ATLANTIC BLVD. AS PER DEEDS OF RECORD AND P.B. 33, PG. 15-15C.

- PREPARED BY -
CLARY, MILLER & ASSOCIATES, INC.
4041 SUNBEAM ROAD
JACKSONVILLE, FLORIDA 32217
PH. (904) 733-8110