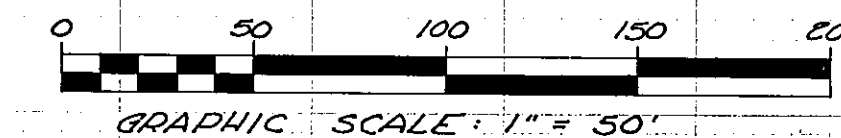
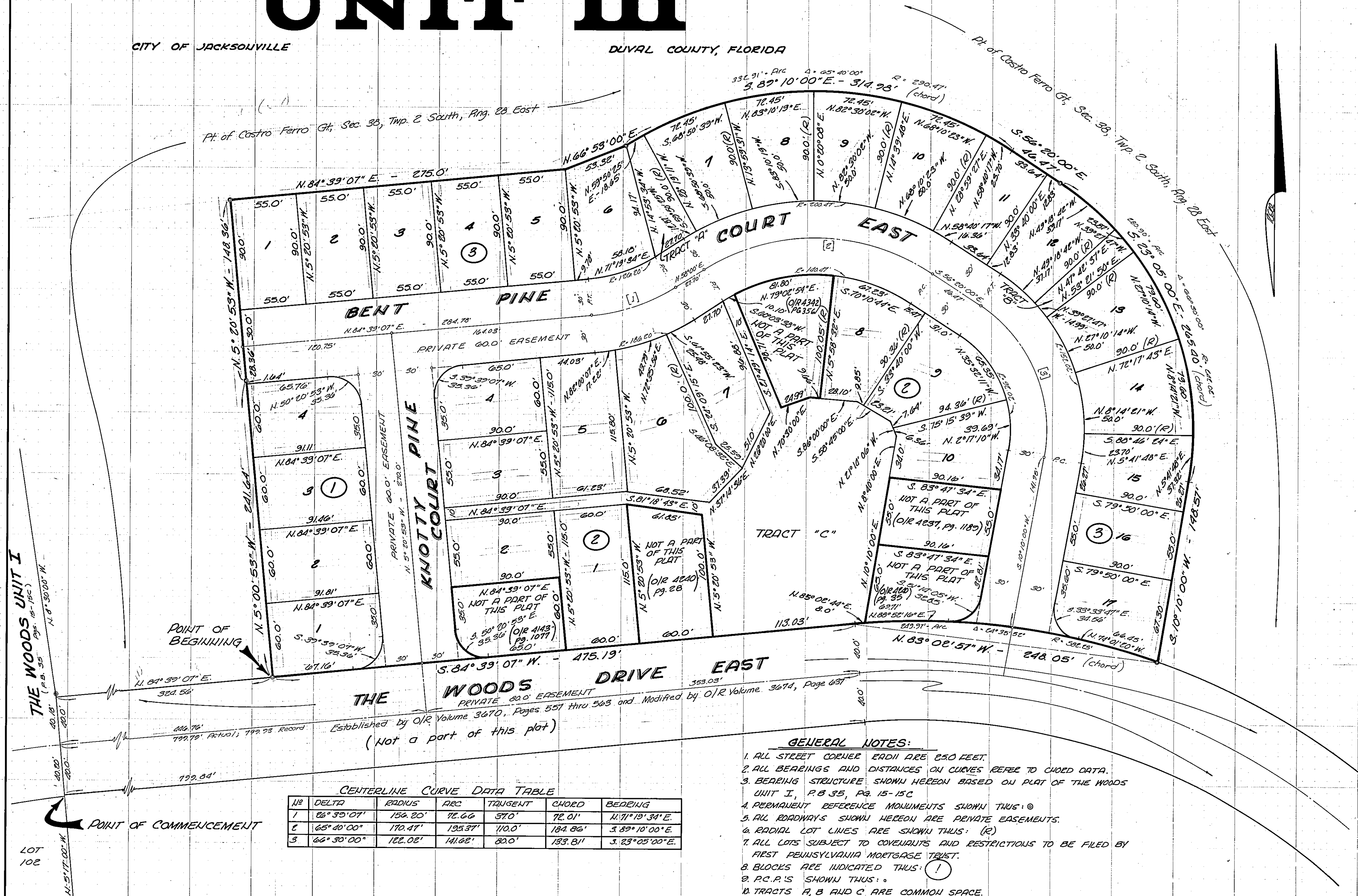


THE WOODS UNIT III



CITY OF JACKSONVILLE

DIVAL COUNTY, FLORIDA



CENTERLINE CURVE DATA TABLE

NO	DELTA	RADIUS	ARC	TANGENT	CHORD	BEARING
1	66° 35' 07"	154.20'	76.66'	37.0'	72.01'	N. 71° 19' 34" E.
2	65° 10' 00"	170.47'	135.37'	110.0'	184.86'	S. 89° 10' 00" E.
3	66° 30' 00"	122.02'	141.62'	80.0'	133.81'	S. 23° 05' 00" E.

- GENERAL NOTES:**
1. ALL STREET CORNER RADII ARE 250 FEET.
 2. ALL BEARINGS AND DISTANCES ON CURVES REFER TO CHORD DATA.
 3. BEARING STRUCTURE SHOWN HEREON BASED ON PLAT OF THE WOODS UNIT I, P.B. 35, PG. 15-15C.
 4. PERMANENT REFERENCE MONUMENTS SHOWN THUS: (C)
 5. ALL ROADWAYS SHOWN HEREON ARE PRIVATE EASEMENTS.
 6. RADIAL LOT LINES ARE SHOWN THUS: (R)
 7. ALL LOTS SUBJECT TO COVENANTS AND RESTRICTIONS TO BE FILED BY FIRST PENNSYLVANIA MORTGAGE TRUST.
 8. BLOCKS ARE INDICATED THUS: (1)
 9. R.C.P.'S SHOWN THUS: (o)
 10. TRACTS A, B AND C ARE COMMON SPACE.