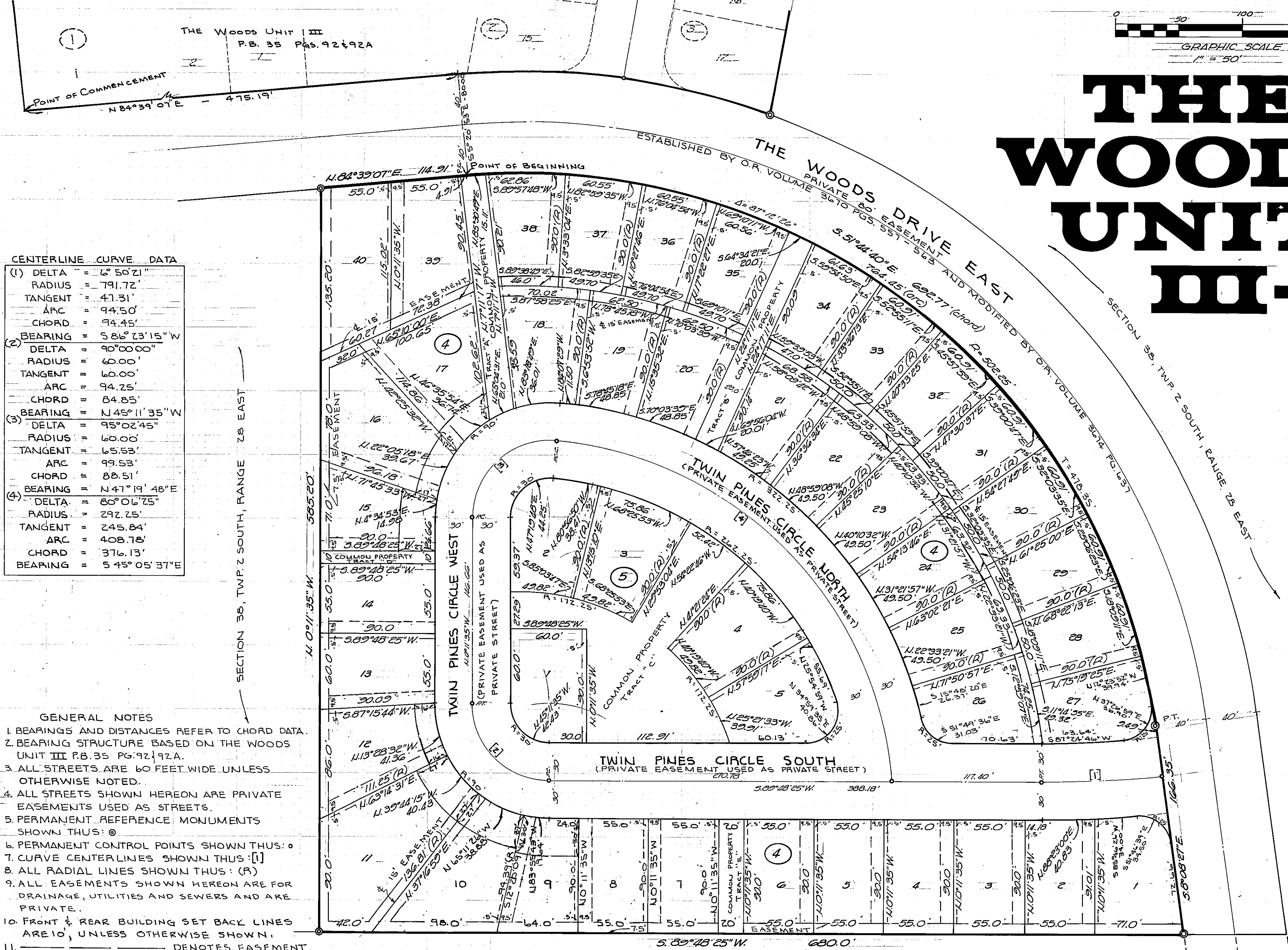


# THE WOODS UNIT III-A



CENTERLINE CURVE DATA

(1)	DELTA	= 6° 50' 21"
	RADIUS	= 791.72'
	TANGENT	= 47.31'
	ARC	= 94.50'
	CHORD	= 94.45'
(2)	BEARING	= S 86° 13' 15" W
	DELTA	= 90° 00' 00"
	RADIUS	= 60.00'
	TANGENT	= 60.00'
	ARC	= 94.25'
	CHORD	= 84.85'
(3)	BEARING	= N 45° 11' 35" W
	DELTA	= 95° 02' 45"
	RADIUS	= 60.00'
	TANGENT	= 65.53'
	ARC	= 99.53'
	CHORD	= 88.51'
(4)	BEARING	= N 47° 19' 48" E
	DELTA	= 80° 06' 25"
	RADIUS	= 292.25'
	TANGENT	= 245.84'
	ARC	= 408.78'
	CHORD	= 376.13'
	BEARING	= S 45° 05' 37" E

- GENERAL NOTES
1. BEARINGS AND DISTANCES REFER TO CHORD DATA.
  2. BEARING STRUCTURE BASED ON THE WOODS UNIT III P.B. 35 PG. 92 & 92A.
  3. ALL STREETS ARE 60 FEET WIDE UNLESS OTHERWISE NOTED.
  4. ALL STREETS SHOWN HEREON ARE PRIVATE EASEMENTS USED AS STREETS.
  5. PERMANENT REFERENCE MONUMENTS SHOWN THUS: ⊙
  6. PERMANENT CONTROL POINTS SHOWN THUS: ○
  7. CURVE CENTER LINES SHOWN THUS: [ ]
  8. ALL RADIAL LINES SHOWN THUS: (R)
  9. ALL EASEMENTS SHOWN HEREON ARE FOR DRAINAGE, UTILITIES AND SEWERS AND ARE PRIVATE.
  10. FRONT & REAR BUILDING SET BACK LINES ARE 10', UNLESS OTHERWISE SHOWN.
  11. \_\_\_\_\_ DENOTES EASEMENT.
  12. \_\_\_\_\_ DENOTES SIDE BUILDING SET BACK LINES.
  13. TRACTS "A", "B", "C", "D" & "E" ARE COMMON PROPERTY.