

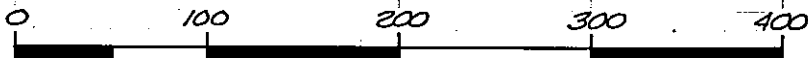
THE WOODS UNIT II

CITY OF JACKSONVILLE

DUVAL COUNTY, FLORIDA

SHEET 2 OF 2 SHEETS

77-91321



GRAPHIC SCALE: 1 INCH = 100 FEET

CLERK'S CERTIFICATE:

THIS IS TO CERTIFY THAT THIS PLAT HAS BEEN APPROVED BY THE CITY OF JACKSONVILLE AND SUBMITTED TO ME FOR RECORDING AND IS RECORDED IN PLAT BOOK 36 PAGES 15-15A OF THE PUBLIC RECORDS OF DUVAL COUNTY, FLORIDA.

S. Morgan Slaughter
CLERK

Robert C. Forbes
DEPUTY CLERK

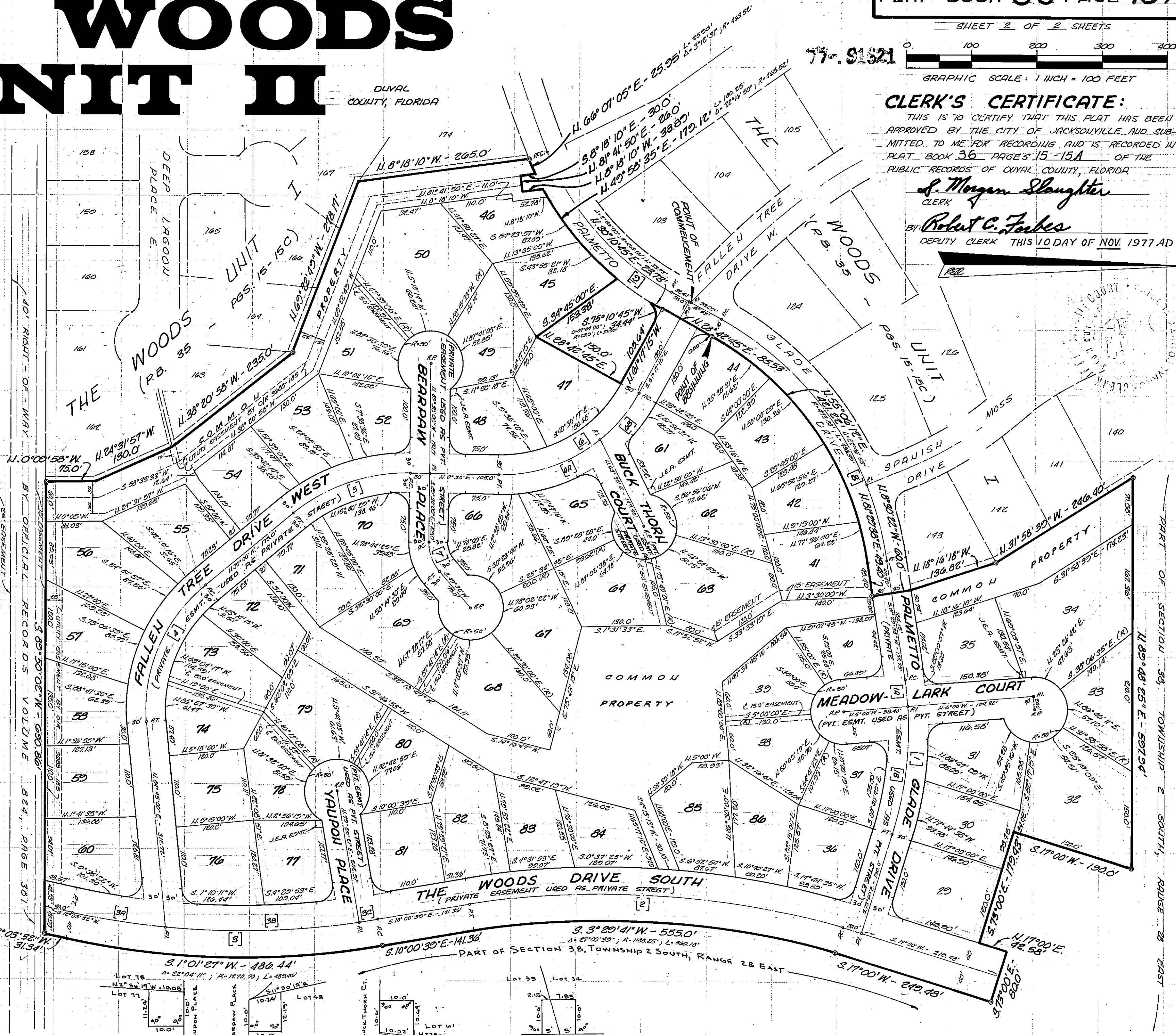
THIS 10 DAY OF NOV. 1977 AD

GENERAL NOTES:

1. BEARINGS AND DISTANCES ON CURVES REFER TO CHORD DATA.
2. BEARING STRUCTURE BASED ON THE WOODS UNIT I, P.B. 35, PGS. 15-15C.
3. CORNER LOT FRONTAGES RUN TO STREET CORNER INTERSECTIONS.
4. ALL STREET CORNER RADII ARE 25.0 FT.
5. ALL STREETS ARE 60.0 FEET WIDE UNLESS OTHERWISE NOTED.
6. ALL STREETS SHOWN HEREON ARE PRIVATE EASEMENTS USED AS PRIVATE STREETS.
7. PERMANENT REFERENCE MONUMENTS SHOWN THUS: (M)
8. PERMANENT CONTROL POINTS SHOWN THUS: (C)
9. ALL CUL-DE-SAC RADII ARE 50.0 FEET.
10. ALL LOTS SUBJECT TO COVENANTS AND RESTRICTIONS TO BE FILED BY FIRST PENNSYLVANIA MORTGAGE TRUST.
11. ALL EASEMENTS SHOWN HEREON ARE FOR DRAINAGE, UTILITIES AND SEWERS, AND ARE PRIVATE, EXCEPT J.E.A. EASEMENTS.
12. J.E.A. EASEMENTS ARE DEDICATED TO THE JACKSONVILLE ELECTRIC AUTHORITY AND ITS SUCCESSORS FOR USE IN ITS UNDERGROUND DISTRIBUTION SYSTEM.
13. CURVE CENTERLINES SHOWN THUS: (L)
14. RADIAL LINES SHOWN THUS: (R)

CENTERLINE CURVE DATA

1. Δ = 25°30'00"	3.C. Δ = 1°23'45"
R = 536.95'	R = 1230.70'
A = 239.03'	A = 30.0'
T = 121.53'	T = 15.0'
14.A. Δ = 4°25'30"	A. Δ = 56°15'00"
R = 536.95'	R = 243.13'
A = 41.47'	A = 238.62'
T = 22.75'	T = 129.96'
14.B. Δ = 21°04'52"	5. Δ = 30°30'00"
R = 536.95'	R = 278.56'
A = 197.56'	A = 192.01'
T = 22.91'	T = 100.0'
2. Δ = 27°00'30"	6. Δ = 61°47'15"
R = 1228.25'	R = 242.34'
A = 579.04'	A = 261.34'
T = 225.0'	T = 145.0'
3. Δ = 22°04'11"	6.A. Δ = 37°44'45"
R = 1230.70'	R = 242.34'
A = 474.05'	A = 152.65'
T = 240.0'	T = 82.84'
3.A. Δ = 6°44'12"	6.B. Δ = 24°02'32"
R = 1230.70'	R = 242.34'
A = 144.74'	A = 101.62'
T = 76.46'	T = 51.60'
3.B. Δ = 13°56'04"	7. Δ = 41°00'00"
R = 1230.70'	R = 66.81'
A = 222.31'	A = 47.85'
T = 152.32'	T = 25.0'
8. Δ = 52°46'53"	9. Δ = 30°00'35"
R = 503.83'	R = 433.52'
A = 464.13'	A = 225.16'
T = 250.0'	T = 153.56'



10' x 10' J.E.A. EASEMENT DETAIL - SCALE: 1" = 20'

PREPARED BY:
Clarke, Waite & Frye, Incorporated
JACKSONVILLE, FLORIDA