

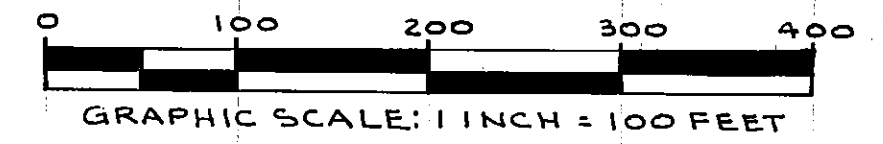
# THE WOODS UNIT I-A

CITY OF JACKSONVILLE

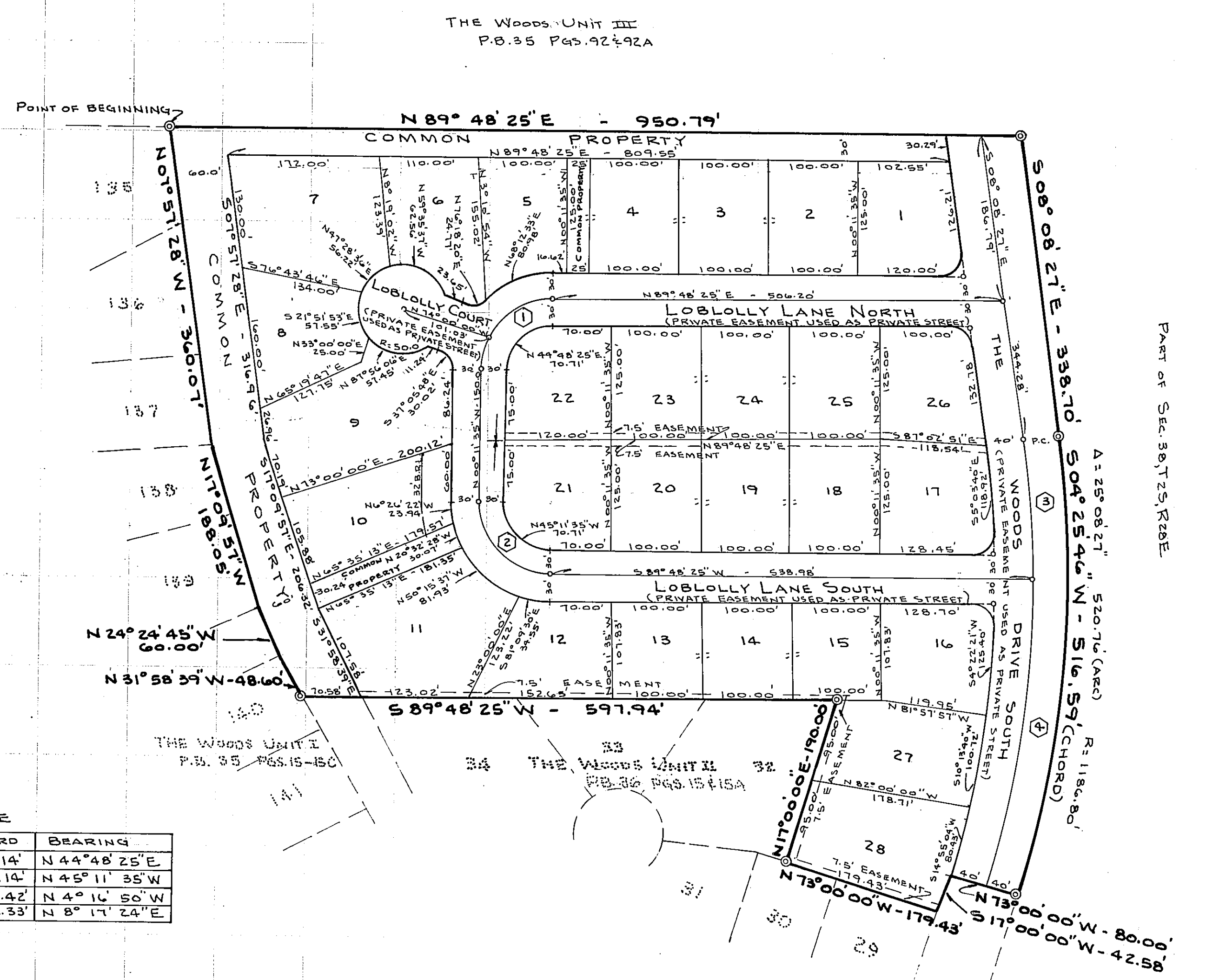
DUVAL COUNTY, FLORIDA

PLAT BOOK 36 PAGE 65A

SHEET 2 OF 2 SHEETS



- GENERAL NOTES:
1. BEARINGS AND DISTANCES ON CURVES REFER TO CHORD DATA.
  2. BEARING STRUCTURE BASED ON THE WOODS UNIT I, P.B. 35, PGS. 15 - 15C.
  3. CORNER LOT FRONTAGES RUN TO STREET CORNER INTERSECTIONS.
  4. ALL STREET CORNER RADII ARE 25.0 FEET.
  5. ALL STREETS ARE 60.0 FEET WIDE UNLESS OTHERWISE NOTED.
  6. ALL STREETS SHOWN HEREON ARE PRIVATE EASEMENTS USED AS STREETS.
  7. PERMANENT REFERENCE MONUMENTS SHOWN THUS: ⊙
  8. PERMANENT CONTROL POINTS SHOWN THUS: ○
  9. ALL CUL-DE-SAC RADII ARE 50.0 FEET.
  10. BUILDING RESTRICTION LINES ARE 25 FEET FROM ALL RIGHT-OF-WAYS UNLESS OTHERWISE NOTED.
  11. ALL EASEMENTS SHOWN HEREON ARE FOR DRAINAGE, UTILITIES AND SEWERS, AND ARE PRIVATE.
  12. CURVE CENTERLINES SHOWN THUS: ⊕



CENTERLINE CURVE TABLE

No.	DELTA	RADIUS	ARC	TANGENT	CHORD	BEARING
1.	90°00'00"	80.00'	125.66'	80.00'	113.14'	N 44°48'25"E
2.	90°00'00"	80.00'	125.66'	80.00'	113.14'	N 45°11'35"W
3.	7°43'15"	1146.80'	154.54'	77.38'	154.42'	N 4°16'50"W
4.	17°25'12"	1146.80'	348.67'	175.69'	347.33'	N 8°17'24"E

PREPARED BY:  
DREWES, WAITZ, & FRYE, INC.  
JACKSONVILLE, FLORIDA