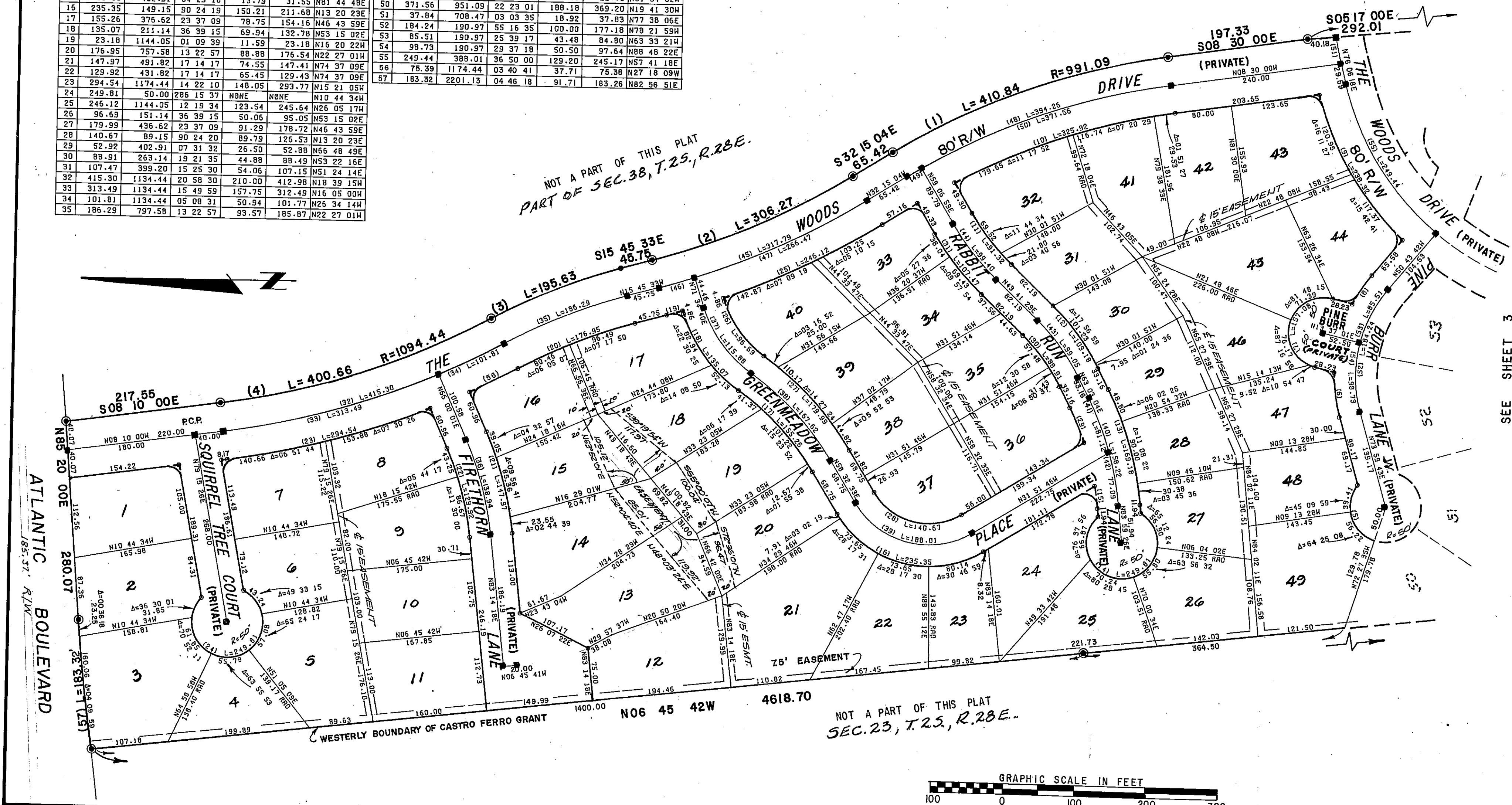


THE WOODS UNIT 1
CITY OF JACKSONVILLE DUVAL COUNTY FLORIDA

CURVE TABLE						
NO	ARC LENGTH	RADIUS	DELTA	TAN	L.CH.	CH.BRG
1	410.84	991.09	23 45 04	208.41	407.90	N20 22 32W
2	306.27	1064.05	16 29 31	154.20	305.22	N24 00 18W
3	195.63	837.57	13 22 57	98.26	195.19	N22 27 01W
4	400.66	1094.44	20 58 30	202.60	398.42	N18 39 15W
5	95.63	50.00	109 35 07	70.86	81.71	N72 19 59E
6	63.80	220.97	16 32 38	32.13	63.58	N82 16 02E
7	157.08	50.00	180 00 00	06044.00	100.00	N76 22 59W
8	48.51	220.97	12 34 37	24.35	48.41	N57 01 00W
9	238.32	428.01	31 54 08	122.34	235.25	N59 14 31E
10	325.92	911.09	20 29 48	164.72	324.19	N18 44 54W
11	91.32	339.20	15 25 30	45.94	91.04	N51 24 14E
12	109.18	323.14	19 21 35	55.12	108.66	N53 22 16E
13	169.18	462.91	20 56 23	85.54	168.24	N73 31 15E
14	249.81	50.00	286 15 37	NONE	NONE	N06 00 34W
15	31.56	402.91	04 29 16	15.79	31.55	N81 44 48E
16	235.35	149.15	90 24 19	150.21	211.68	N13 20 23E
17	155.26	376.62	23 37 09	78.75	154.16	N46 43 59E
18	135.07	211.14	36 39 15	69.94	132.78	N53 15 02E
19	23.18	1144.05	01 09 39	11.59	23.18	N16 20 22W
20	176.95	757.58	13 22 57	88.88	176.54	N22 27 01W
21	147.97	491.82	17 14 17	74.55	147.41	N74 37 09E
22	129.92	431.82	17 14 17	65.45	129.43	N74 37 09E
23	294.54	1174.44	14 22 10	148.05	293.77	N15 21 05W
24	249.81	50.00	286 15 37	NONE	NONE	N10 44 34W
25	246.12	1144.05	12 19 34	123.54	245.64	N26 05 17W
26	96.69	151.14	36 39 15	50.06	95.05	N53 15 02E
27	179.99	436.62	23 37 09	91.29	178.72	N46 43 59E
28	140.67	89.15	90 24 20	89.79	126.53	N13 20 23E
29	52.92	402.91	07 31 32	26.50	52.88	N66 48 49E
30	88.91	263.14	19 21 35	44.88	88.49	N53 22 16E
31	107.47	399.20	15 25 30	54.06	107.15	N51 24 14E
32	415.30	1134.44	20 58 30	210.00	412.98	N18 39 15W
33	313.49	1134.44	15 49 59	157.75	312.49	N16 05 00W
34	101.81	1134.44	05 08 31	50.94	101.77	N26 34 14W
35	186.29	797.58	13 22 57	93.57	185.87	N22 27 01W

CURVE TABLE						
NO	ARC LENGTH	RADIUS	DELTA	TAN	L.CH.	CH.BRG
36	138.94	461.82	17 14 17	70.00	138.42	N74 37 09E
37	115.88	181.14	36 39 15	60.00	113.91	N53 15 02E
38	167.62	406.62	23 37 09	85.02	166.44	N46 43 59E
39	188.01	119.15	90 24 20	120.00	169.10	N13 20 23E
40	158.22	432.91	20 56 23	80.00	157.34	N73 31 15E
41	81.12	432.91	10 44 13	40.68	81.01	N68 25 10E
42	77.09	432.91	10 12 10	38.65	76.99	N78 53 22E
43	99.05	293.14	19 21 35	50.00	98.58	N53 22 16E
44	99.40	369.20	15 25 30	50.00	99.10	N51 24 14E
45	317.79	1104.05	16 29 31	160.00	316.69	N24 00 18W
46	51.32	1104.05	02 39 48	25.67	51.32	N17 05 27W
47	266.47	1104.05	13 49 43	133.88	265.82	N25 20 12W
48	394.26	951.09	23 45 04	200.00	391.44	N20 22 32W
49	22.69	951.09	01 22 03	11.35	22.70	N31 34 02W
50	371.56	951.09	22 23 01	188.18	369.20	N19 41 30W
51	37.84	708.47	03 03 35	18.92	37.83	N77 38 06E
52	184.24	190.97	55 16 35	100.00	177.18	N78 21 59W
53	85.51	190.97	25 39 17	43.48	84.80	N63 33 21W
54	98.73	190.97	29 37 18	50.50	97.64	N88 48 22E
55	249.44	388.01	36 50 00	129.20	245.17	N57 41 18E
56	75.39	1174.44	03 40 41	37.71	75.38	N27 18 09W
57	183.32	2201.13	04 46 18	91.71	183.28	N28 56 51E

- NOTES:
1. ALL FILLET RADII ARE 20' UNLESS OTHERWISE SHOWN
 2. PERMANENT REFERENCE MONUMENTS ARE SHOWN THIS \odot
 3. ALL LOTS HAVE A 25' BUILDING RESTRICTION LINES WHEN MEASURED FROM THE STREET LINE UNLESS OTHERWISE SHOWN AND ARE SUBJECT TO COVENANTS AND RESTRICTIONS TO BE RECORDED BY THE INTERCOASTAL INVESTMENTS INC.
 4. ALL EASEMENTS SHOWN ON THIS PLAT ARE FOR DRAINAGE AND UTILITIES & SEWERS.
 5. PERMANENT CONTROL POINTS SHOWN THIS \blacksquare
 6. ALL RIGHT-OF-WAY WIDTHS ARE 60' EXCEPT AS SHOWN.
 7. BEARINGS ARE BASED ON S.R.D. DATUM FOR ATLANTIC BOULEVARD.
 8. RADIAL LOT LINES SHOWN THIS: \odot RAD
 9. BEARINGS AND DISTANCES SHOWN ON BLOCK CORNERS ARE TO STREET LINE INTERSECTIONS, UNLESS OTHERWISE NOTED.
 10. ALL EASEMENTS SHOWN HEREON ARE 15' IN WIDTH UNLESS OTHERWISE NOTED.



SEE SHEET 3