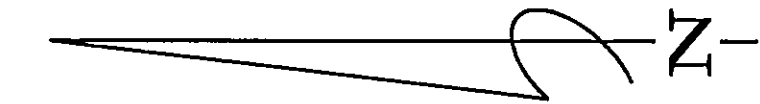


THE WOODS UNIT XIB

A Portion of the Bartolomeo De Castro Y. Ferrer Grant, Section 38,
Township 2 South, Range 28 East, Duval County, Florida.

PLAT BOOK 50 PAGE 11C

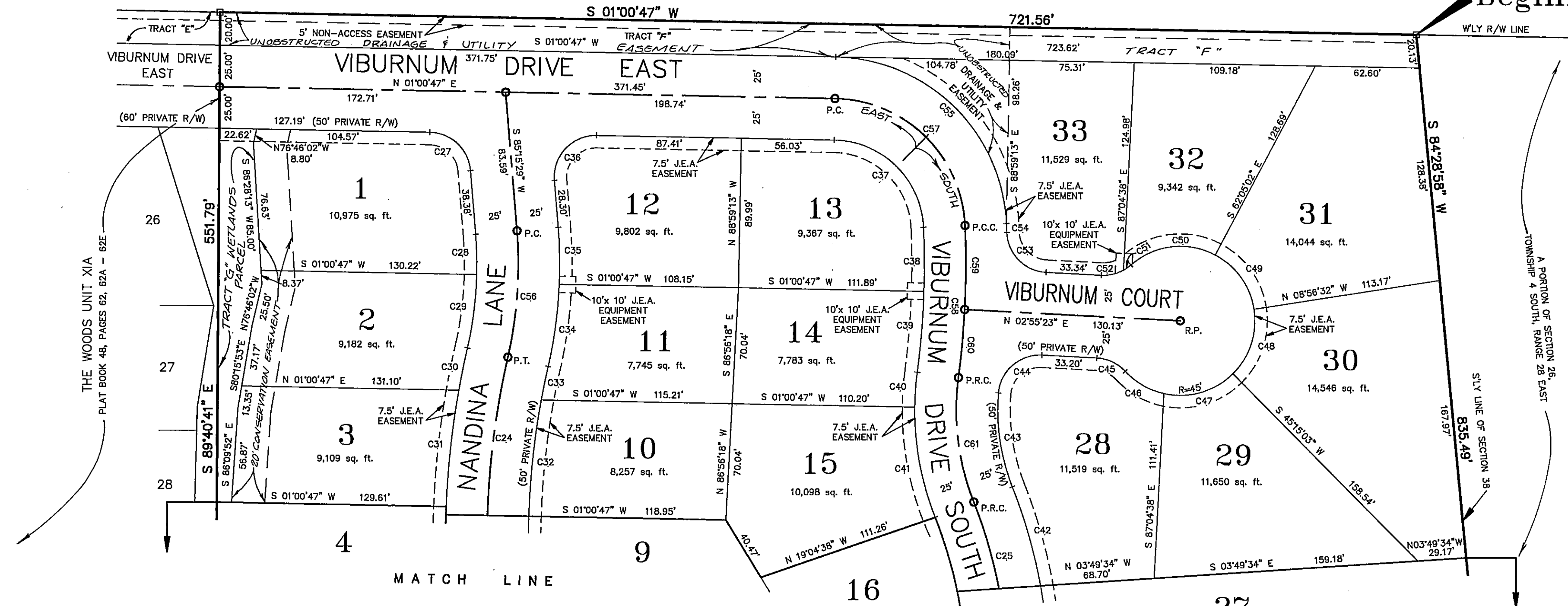
SHEET 4 OF 4 SHEETS
SEE SHEET 2 FOR GENERAL NOTES & LEGEND



HODGES BOULEVARD

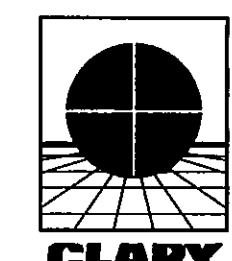
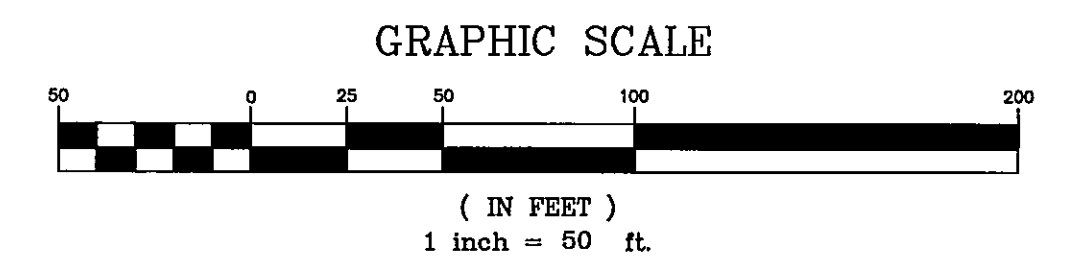
(A VARIABLE WIDTH R/W)

Point of Beginning



CURVE	RADIUS	LENGTH	TANGENT	CHORD	BEARING	DELTA
C24	500.00'	141.99'	71.48'	141.51'	N 85°17'15" W	16°16'15"
C25	289.99'	121.87'	61.85'	120.98'	N 80°24'38" E	24°04'47"
C27	25.00'	36.78'	22.61'	33.54'	N 43°08'08" E	84°14'42"
C28	225.00'	24.35'	12.19'	24.34'	N 88°21'31" E	06°12'04"
C29	225.00'	44.72'	22.44'	44.65'	S 82°50'47" E	11°23'20"
C30	525.00'	26.03'	13.02'	26.03'	N 78°34'21" W	02°50'28"
C31	525.00'	70.34'	35.22'	70.28'	N 83°49'52" W	07°40'34"
C32	475.00'	70.34'	35.24'	70.28'	N 83°53'29" W	08°29'05"
C33	475.00'	20.70'	10.35'	20.70'	N 78°24'02" W	02°29'49"
C34	275.00'	50.05'	25.09'	49.98'	S 82°21'57" E	10°25'41"
C35	275.00'	34.37'	17.21'	34.35'	N 88°50'21" E	07°09'43"
C36	25.00'	41.78'	27.85'	37.09'	N 46°51'82" W	95°45'18"
C37	55.00'	82.86'	51.58'	75.24'	N 44°10'24" E	86°19'15"
C38	494.94'	38.54'	19.28'	38.53'	N 89°33'53" E	04°27'42"
C39	494.94'	49.01'	24.53'	48.99'	S 85°22'03" E	08°40'26"
C40	175.00'	21.15'	10.59'	21.13'	N 85°59'31" W	05°55'23"
C41	175.00'	67.73'	34.30'	67.31'	S 79°27'31" W	22°10'32"
C42	314.99'	62.24'	31.22'	62.14'	N 74°01'52" E	11°19'14"
C43	125.00'	57.45'	29.24'	56.95'	S 81°32'16" W	26°20'03"

CURVE	RADIUS	LENGTH	TANGENT	CHORD	BEARING	DELTA
C44	25.00'	38.49'	24.23'	34.80'	N 41°11'10" W	88°13'05"
C45	25.00'	19.38'	10.21'	18.90'	N 25°07'51" E	44°24'55"
C46	45.00'	37.25'	14.06'	26.83'	S 29°59'34" W	34°41'09"
C47	45.00'	45.08'	24.63'	43.92'	S 16°03'04" E	57°23'48"
C48	45.00'	42.58'	23.02'	40.99'	S 71°50'45" E	54°11'35"
C49	45.00'	41.74'	22.51'	40.26'	N 54°29'13" E	53°08'30"
C50	45.00'	54.51'	31.16'	51.24'	N 06°47'17" W	69°24'30"
C51	25.00'	5.41'	2.71'	5.40'	S 35°17'47" E	12°23'31"
C52	25.00'	13.97'	7.17'	13.79'	S 13°05'19" E	32°01'24"
C53	25.00'	37.07'	22.89'	33.77'	S 45°24'23" W	84°58'00"
C54	544.94'	5.29'	2.64'	5.29'	N 87°36'42" E	00°33'21"
C55	105.00'	158.19'	98.47'	143.65'	N 44°10'24" E	86°19'15"
C56	250.00'	76.75'	38.68'	76.45'	S 85°56'49" E	17°35'24"
C57	80.00'	120.53'	75.02'	109.45'	N 44°10'24" E	86°19'15"
C58	519.94'	91.98'	46.11'	91.86'	S 87°35'54" E	10°08'08"
C59	519.94'	50.72'	25.38'	50.70'	S 89°52'18" E	05°35'19"
C60	519.94'	41.26'	20.64'	41.25'	S 84°48'14" E	04°32'49"
C61	150.00'	76.18'	38.93'	75.36'	S 82°58'13" W	29°05'55"



PREPARED BY:
Clary & Associates, Inc.
PROFESSIONAL LAND SURVEYORS
3830 CROWN POINT ROAD
JACKSONVILLE, FLORIDA 32257
(904) 260-2703