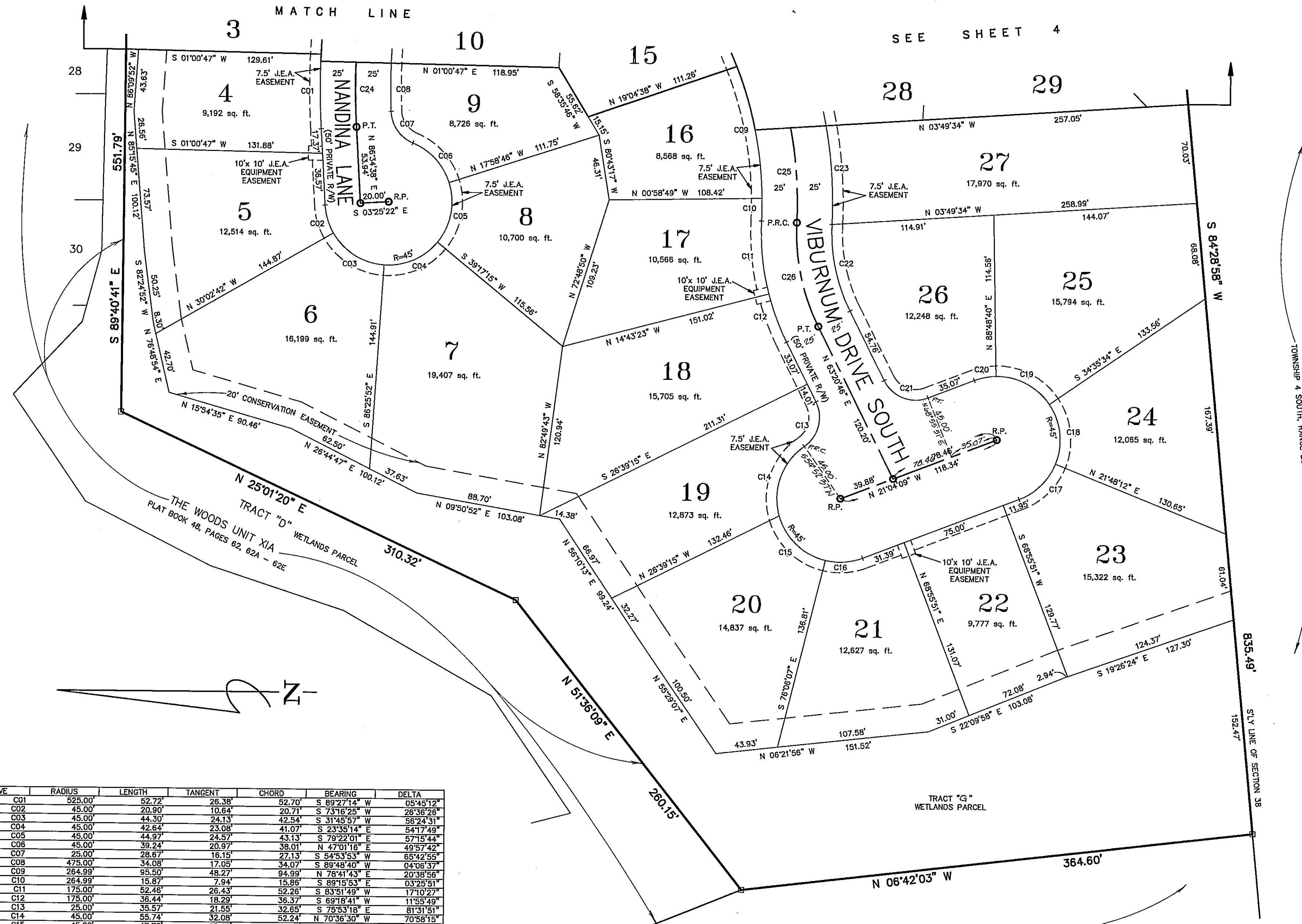


THE WOODS UNIT XIB

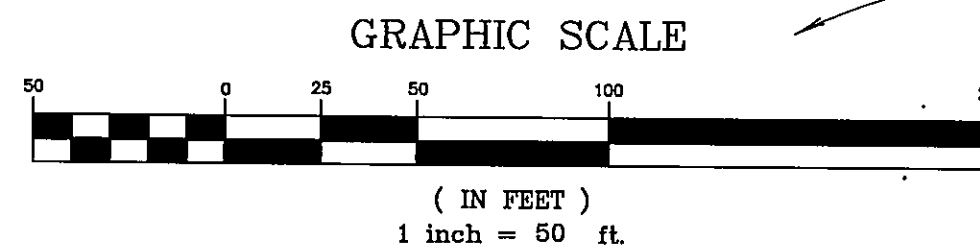
A Portion of the Bartolomeo De Castro Y. Ferrer Grant, Section 38,
Township 2 South, Range 28 East, Duval County, Florida.

PLAT BOOK 50 PAGE 113

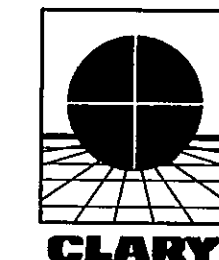
SHEET 3 OF 4 SHEETS
SEE SHEET 2 FOR GENERAL NOTES & LEGEND



CURVE	RADIUS	LENGTH	TANGENT	CHORD	BEARING	DELTA
C01	525.00'	52.72'	26.38'	52.70'	S 89°27'14" W	05°45'12"
C02	45.00'	20.90'	10.64'	20.71'	S 73°16'25" W	26°38'26"
C03	45.00'	44.30'	24.13'	42.54'	S 31°45'57" W	56°24'31"
C04	45.00'	42.64'	23.08'	41.07'	S 23°35'14" E	54°17'49"
C05	45.00'	44.97'	24.57'	43.13'	S 79°27'01" E	57°15'44"
C06	45.00'	39.24'	20.97'	38.01'	N 47°01'16" E	49°57'42"
C07	25.00'	28.67'	16.15'	27.13'	S 54°53'53" W	65°42'55"
C08	475.00'	34.08'	17.05'	34.07'	S 89°48'40" W	04°06'37"
C09	264.99'	95.50'	48.27'	94.99'	N 78°41'43" E	20°38'56"
C10	264.99'	15.83'	7.94'	15.86'	S 89°15'53" E	03°25'51"
C11	175.00'	52.48'	26.43'	52.26'	S 83°51'49" W	17°10'27"
C12	175.00'	36.44'	18.29'	36.37'	S 69°18'41" W	11°55'49"
C13	25.00'	35.57'	21.55'	32.65'	S 75°53'18" E	81°31'51"
C14	45.00'	55.74'	32.08'	52.24'	N 70°36'30" W	70°58'15"
C15	45.00'	47.78'	26.42'	46.56'	S 43°29'28" W	60°49'50"
C16	45.00'	26.82'	13.82'	26.42'	S 03°59'48" E	34°08'42"
C17	45.00'	37.02'	19.63'	35.98'	S 44°38'08" E	47°07'58"
C18	45.00'	44.29'	24.12'	42.52'	N 83°36'14" E	58°23'20"
C19	45.00'	44.45'	24.23'	42.66'	N 27°06'51" E	58°35'26"
C20	45.00'	15.62'	7.89'	15.54'	N 11°07'31" W	19°53'17"
C21	25.00'	36.83'	22.67'	33.59'	S 21°08'18" W	84°24'55"
C22	125.00'	63.50'	32.45'	62.82'	S 77°53'54" W	29°06'16"
C23	314.99'	70.14'	35.22'	70.00'	N 86°04'16" E	12°45'33"
C24	500.00'	141.99'	71.48'	141.51'	N 85°17'15" W	16°16'19"
C25	289.99'	121.87'	61.85'	120.98'	N 80°24'38" E	24°44'47"
C26	150.00'	76.20'	38.94'	75.38'	S 77°53'54" W	29°06'16"



A PORTION OF THE
BARTOLOMEO DE CASTRO Y. FERRER GRANT,
SECTION 38, TOWNSHIP 2 SOUTH, RANGE 28 EAST,
DUVAL COUNTY, FLORIDA.



PREPARED BY:
Clary & Associates, Inc.
PROFESSIONAL LAND SURVEYORS
3630 CROWN POINT ROAD
JACKSONVILLE, FLORIDA 32257
(904) 286-2703