

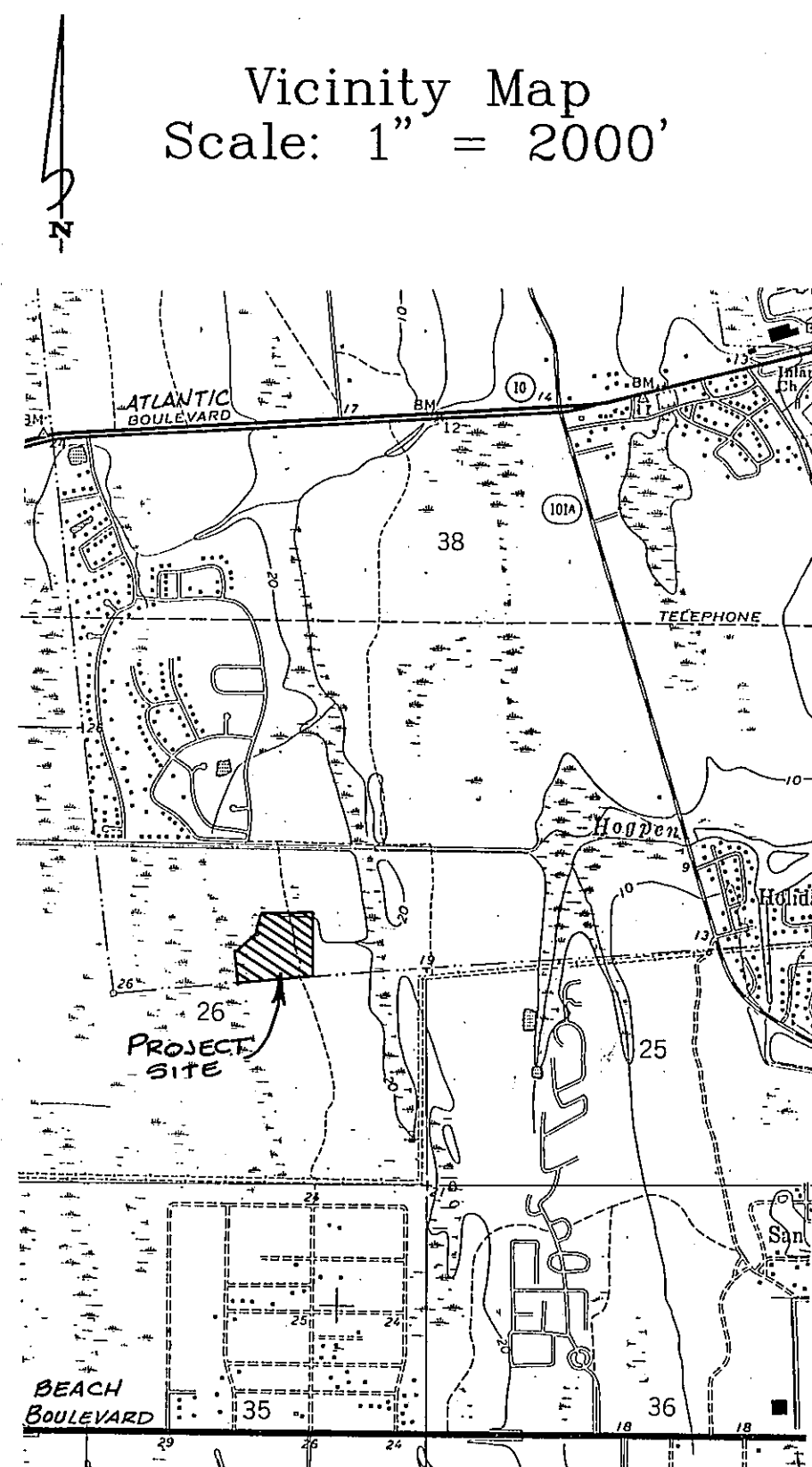
THE WOODS UNIT XII B

A Portion of the Bartolomeo De Castro Y. Ferrer Grant, Section 38,
Township 2 South, Range 28 East, Duval County, Florida.

PLAT BOOK **50** PAGE **11A**

SHEET 2 OF 4 SHEETS
33 LOTS IN THIS UNIT

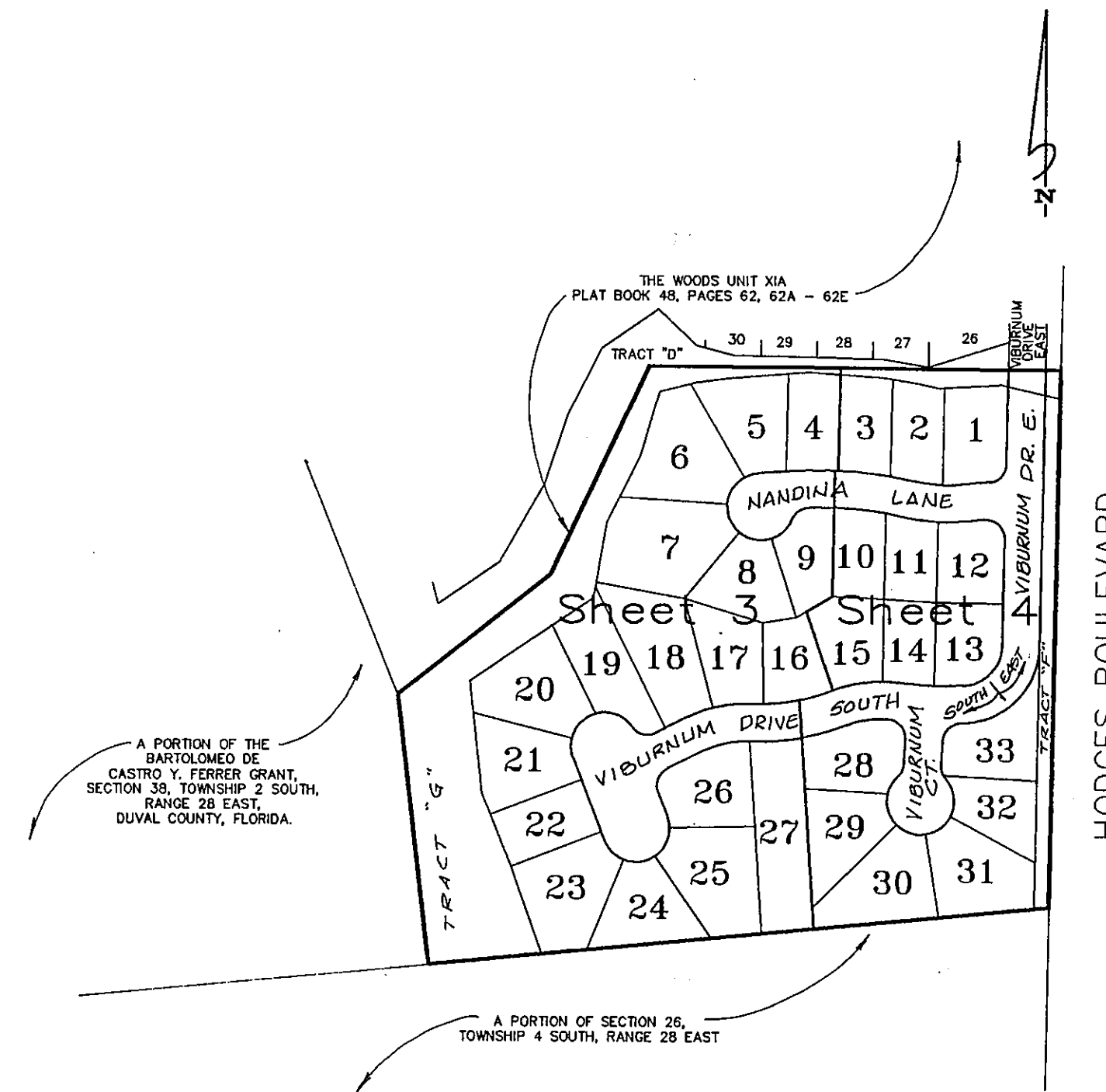
Vicinity Map
Scale: 1" = 2000'



General Notes & Legend

1. BEARINGS SHOWN HEREON ARE BASED ON THE WESTERLY R/W LINE OF HODGES BOULEVARD (VARIABLE WIDTH R/W) AS S 01°00'47" W.
2. EASEMENTS SHOWN HEREON ARE FOR DRAINAGE, UTILITIES AND SEWERS, UNLESS OTHERWISE NOTED HEREON.
3. NOTICE: THERE MAY BE ADDITIONAL RESTRICTIONS THAT ARE NOT RECORDED ON THIS PLAT THAT MAY BE FOUND IN THE PUBLIC RECORDS OF THIS COUNTY. (FLORIDA STATUTE 177.091)
4. ALL PROPERTY SHOWN HEREON LIES WITHIN FLOOD ZONE(S) "X" AS SHOWN ON FLOOD INSURANCE RATE MAP 120077 0241E, CITY OF JACKSONVILLE, DUVAL COUNTY, FLORIDA, DATED AUGUST 19, 1989.
5. BEARINGS AND DISTANCES SHOWN ON CURVES REFER TO CHORD BEARINGS AND DISTANCES.
6. THE TABULATED CURVE TABLE(S) SHOWN ON EACH SHEET IS APPLICABLE ONLY TO THE CURVES THAT APPEAR ON THAT SHEET.
7. CERTAIN EASEMENTS ARE RESERVED FOR THE EXCLUSIVE USE OF THE JACKSONVILLE ELECTRIC AUTHORITY IN CONJUNCTION WITH THE UNDERGROUND DISTRIBUTION SYSTEM.

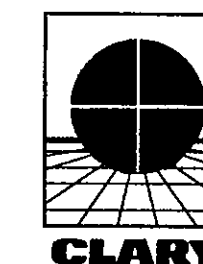
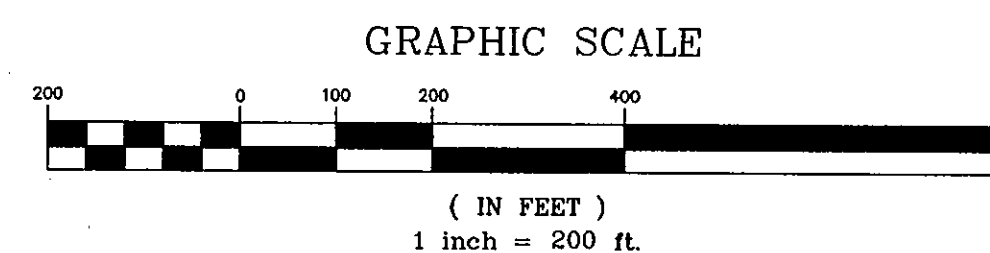
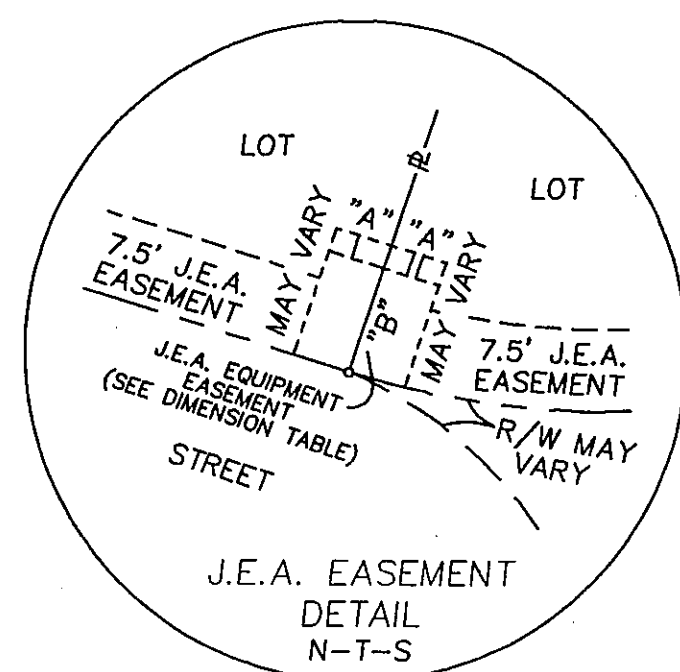
Key Map
Scale: 1" = 200'



LEGEND

- R/W = RIGHT-OF-WAY
- BRL = BUILDING RESTRICTION LINE
- = PERMANENT CONTROL POINT STAMPED R.L.S. # 3377
- PC = POINT OF CURVATURE
- PT = POINT OF TANGENCY
- ORV = OFFICIAL RECORDS VOLUME
- MB = MAP BOOK
- PB = PLAT BOOK
- PG(S) = PAGE(S)
- ESMT = EASEMENT
- A = ARC
- T = TANGENT
- R = RADIUS
- CH = CHORD
- Δ = DELTA
- RP = RADIUS POINT
- = PERMANENT REFERENCE MONUMENT STAMPED R.L.S. # 3377
- = CHANGE IN STREET NAME
- C4 = TABULATED CURVE DATA
- PRC = POINT OF REVERSE CURVE
- PCC = POINT OF COMPOUND CURVE
- RDL = RADIAL LINE
- J.E.A. = JACKSONVILLE ELECTRICAL AUTHORITY

DIMENSION TABLE		
"A"	5'	TYPICAL 10'x 10' J.E.A.
"B"	10'	EQUIPMENT EASEMENT
"A"	10'	TYPICAL 10'x 20' J.E.A.
"B"	10'	EQUIPMENT EASEMENT.



PREPARED BY:
Clary & Associates, Inc.
PROFESSIONAL LAND SURVEYORS
3830 CROWN POINT ROAD
JACKSONVILLE, FLORIDA 32257
(904) 260-2703