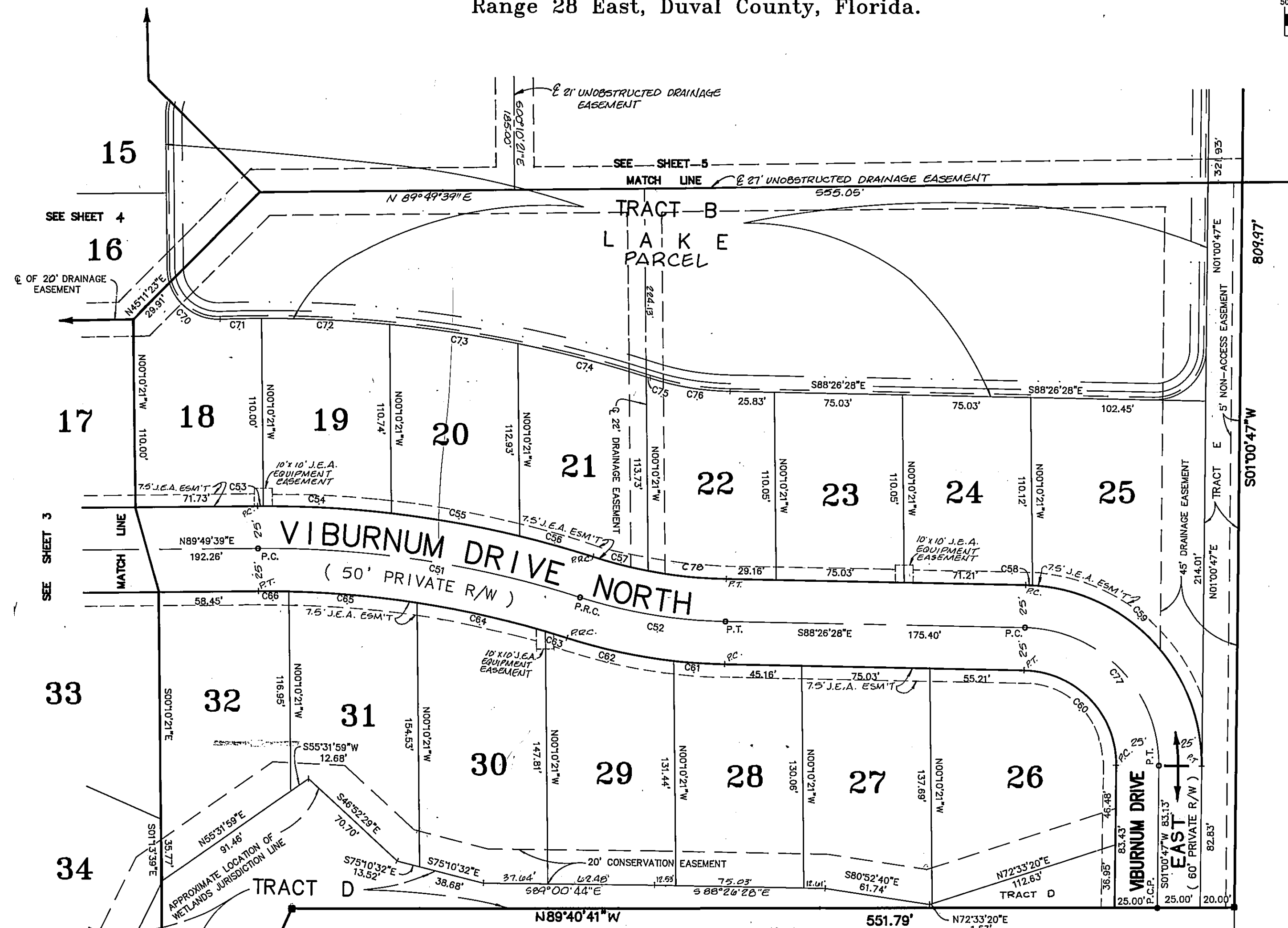
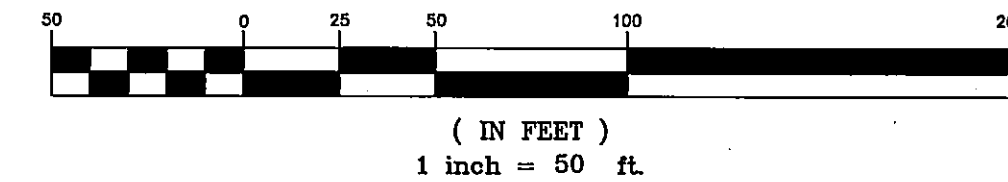


THE WOODS UNIT XI A

PLAT BOOK 48 PAGE 62E

SHEET 6 OF 6 SHEETS
SEE SHEET 2 FOR GENERAL NOTES AND LEGEND
GRAPHIC SCALE

A Portion of the Bartollemo De Castro Y. Ferrer Grant, Section 38, Township 2 South,
Range 28 East, Duval County, Florida.



HODGES BLVD.
(VARIABLE R/W)



SECTION 38, TOWNSHIP 2 SOUTH, RANGE 28 EAST

CURVE TABLE

CURVE	RADIUS	LENGTH	TANGENT	CHORD	BEARING	DELTA
C51	600.00'	191.52'	96.58'	190.71'	N81°01'40"W	181°7'21"
C52	300.00'	86.70'	43.65'	86.40'	S80°09'44"E	16°33'28"
C53	625.00'	3.27'	1.63'	3.27'	S89°58'38"W	00°17'59"
C54	625.00'	75.21'	37.65'	75.16'	N86°25'32"W	08°53'40"
C55	625.00'	75.37'	38.23'	75.33'	N73°28'40"W	07°00'05"
C56	625.00'	44.66'	22.34'	44.65'	N73°55'49"W	04°05'38"
C57	275.00'	33.26'	16.65'	33.24'	S75°20'54"E	06°55'48"
C58	105.00'	3.83'	1.91'	3.83'	N87°23'47"W	02°05'23"
C59	105.00'	160.10'	100.28'	145.04'	N42°40'09"W	87°21'52"
C60	55.00'	85.87'	54.48'	77.41'	N43°42'50"W	89°27'15"
C61	325.00'	29.95'	14.98'	29.94'	S85°48'03"E	05°16'51"
C62	325.00'	63.97'	31.99'	63.94'	S77°31'18"E	11°10'37"
C63	575.00'	13.31'	6.65'	13.31'	N72°32'47"W	01°18'34"
C64	575.00'	77.07'	38.59'	77.01'	N77°02'57"W	07°40'45"
C65	575.00'	75.40'	37.75'	75.35'	N84°38'43"W	07°30'48"
C66	575.00'	17.77'	8.88'	17.77'	N89°17'14"W	01°46'14"
C70	30.00'	39.17'	22.94'	36.45'	S84°23'31"E	74°49'00"
C71	735.00'	24.15'	12.08'	24.15'	S89°08'28"W	01°52'57"
C72	735.00'	75.15'	37.61'	75.12'	N86°59'19"W	05°51'29"
C73	735.00'	75.98'	38.03'	75.95'	N81°05'53"W	05°55'24"
C74	735.00'	77.71'	38.89'	77.67'	N75°06'27"W	06°03'27"
C75	735.00'	2.51'	1.25'	2.51'	N71°58'52"W	00°11'44"
C76	165.00'	47.68'	24.01'	47.52'	S80°09'44"E	16°33'28"
C77	80.00'	124.90'	79.24'	112.50'	N43°42'50"W	89°27'15"
C78	275.00'	46.71'	23.16'	46.16'	N65°37'38"W	09°37'49"



PREPARED BY:
Clary & Associates, Inc.
PROFESSIONAL LAND SURVEYORS
3830 CROWN POINT ROAD
JACKSONVILLE, FLORIDA 32257
(904) 260-2703