

THE WOODS UNIT XI A

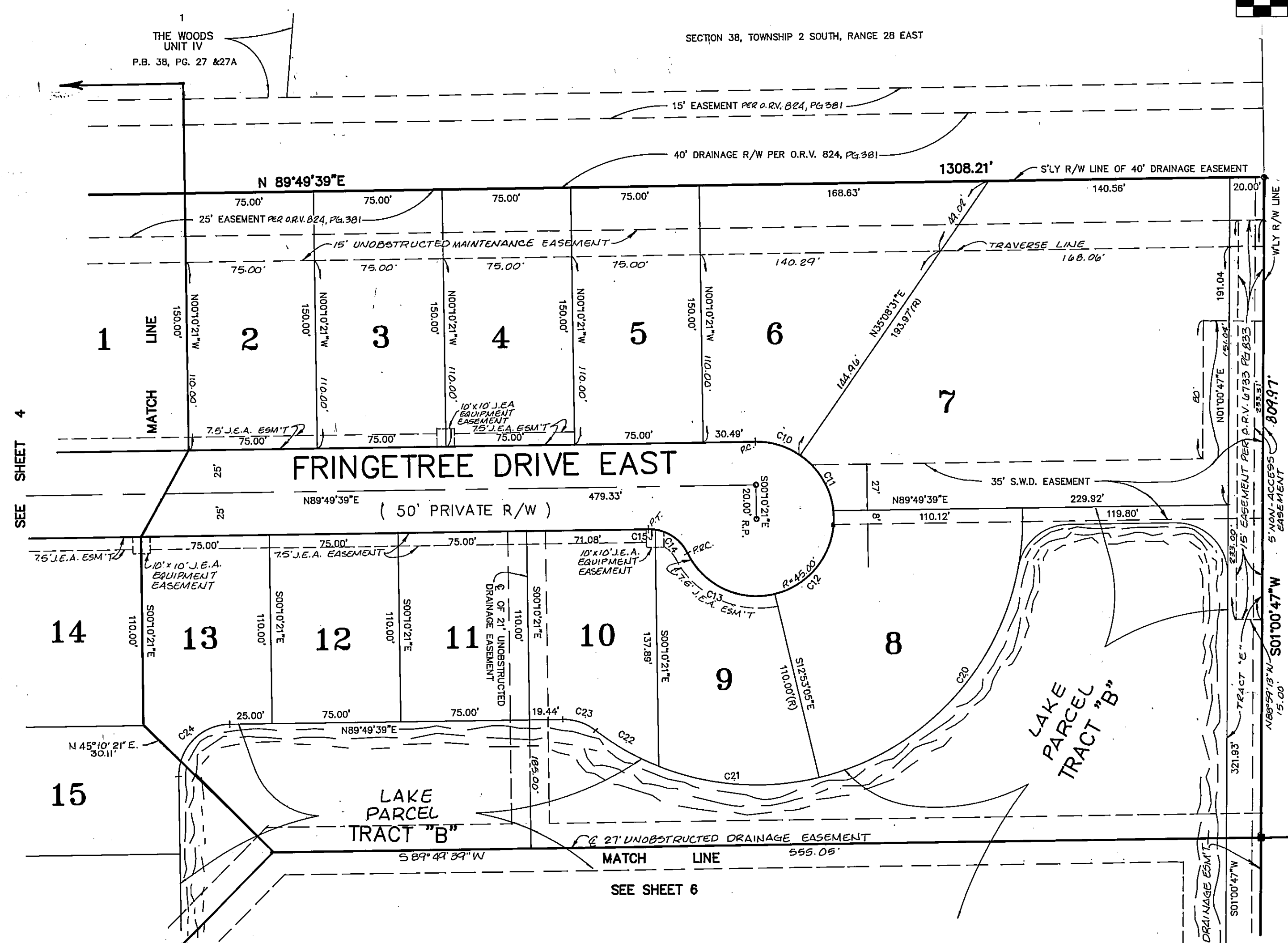
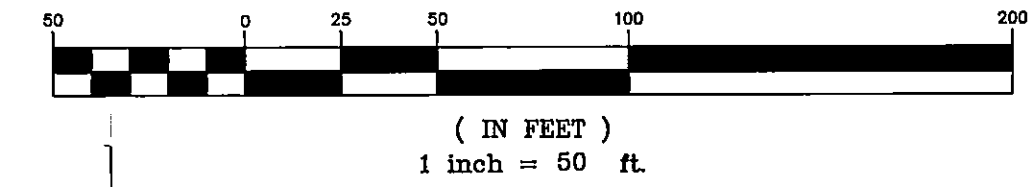
PLAT BOOK 48 PAGE 62D

A Portion of the Bartolomeo De Castro Y. Ferrer Grant, Section 38, Township 2 South,
Range 28 East, Duval County, Florida.

SHEET 5 OF 6 SHEETS

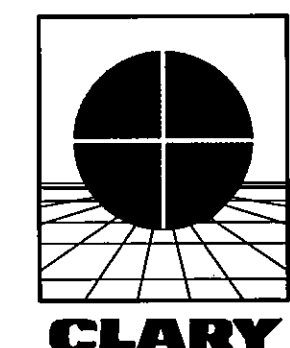
NOTE: SEE SHEET 2 FOR GENERAL NOTES AND LEGEND.

GRAPHIC SCALE



CURVE TABLE:

CURVE	RADIUS	LENGTH	TANGENT	CHORD	BEARING	DELTA
C10	45.00'	27.74'	14.32'	27.30'	N72°30'55"W	35°18'52"
C11	45.00'	38.94'	20.79'	37.74'	N30°03'55"W	49°35'09"
C12	45.00'	64.71'	39.39'	59.27'	N58°55'18"E	82°23'15"
C13	45.00'	60.74'	36.01'	56.23'	S64°13'01"E	77°20'07"
C14	25.00'	24.26'	13.18'	23.32'	N53°20'59"W	55°36'02"
C15	25.00'	3.94'	1.97'	3.93'	N85°39'47"W	09°01'21"
C20	155.00'	213.09'	127.24'	195.69'	N37°43'56"E	78°45'57"
C21	155.00'	95.27'	49.19'	93.77'	S85°16'36"E	35°12'56"
C22	155.00'	42.98'	21.63'	42.84'	S59°43'32"E	15°53'12"
C23	30.00'	20.10'	10.44'	19.73'	N70°58'39"W	38°23'25"
C24	30.00'	38.29'	22.25'	35.74'	S53°15'53"W	73°07'32"



PREPARED BY:
Clary & Associates, Inc.
PROFESSIONAL LAND SURVEYORS
3830 CROWN POINT ROAD
JACKSONVILLE, FLORIDA 32257
(904) 260-2703