

# THE WOODS UNIT XI A

PLAT BOOK 48 PAGE 620

SHEET 4 OF 6 SHEETS

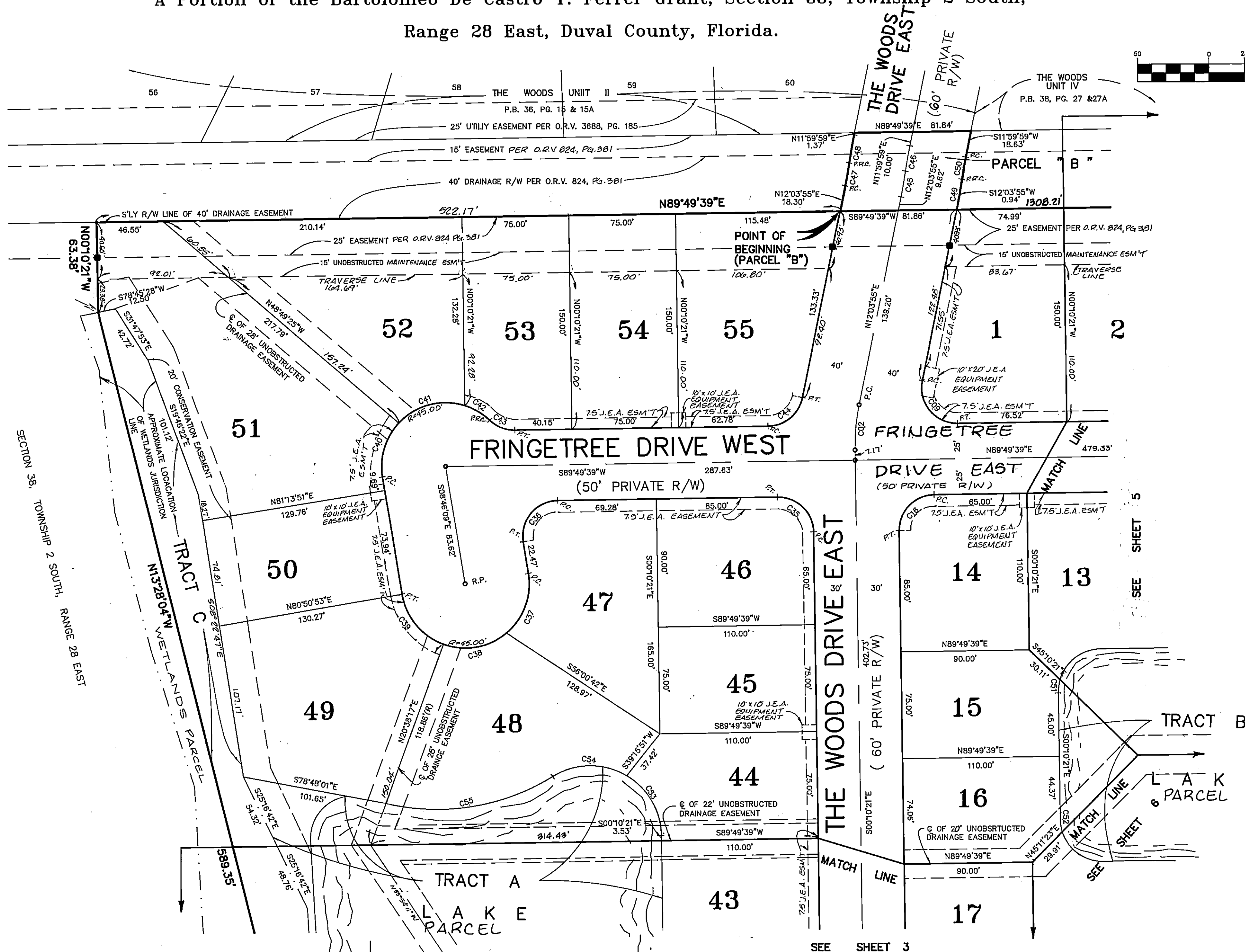
NOTE: SEE SHEET 2 FOR GENERAL NOTES AND LEGEND.

A Portion of the Bartolomeo De Castro Y. Ferrer Grant, Section 38, Township 2 South,  
Range 28 East, Duval County, Florida.

GRAPHIC SCALE

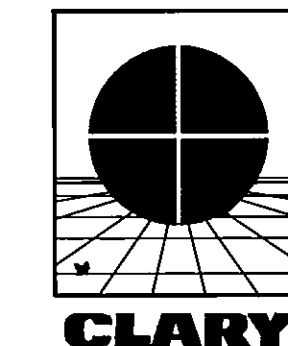


( IN FEET )  
1 inch = 50 ft.



CURVE TABLE:

CURVE	RADIUS	LENGTH	TANGENT	CHORD	BEARING	DELTA	CURVE	RADIUS	LENGTH	TANGENT	CHORD	BEARING	DELTA
C02	150.00'	32.038'	16.08'	31.98'	S05°56'47"W	121°4'16"	C44	25.00'	33.93'	20.18'	31.39'	N50°56'47"E	77°45'44"
C09	25.00'	44.61'	31.00'	38.92'	S39°03'13"E	102°14'18"	C45	338.56'	18.42'	9.21'	18.42'	N10°30'25"E	03°07'01"
C16	25.00'	39.27'	25.00'	35.36'	S44°49'39"W	90°00'00"	C46	338.71'	18.04'	9.02'	18.04'	S10°28'27"W	03°03'05"
C35	25.00'	39.27'	25.00'	35.36'	N45°10'21"W	90°00'00"	C47	298.56'	16.24'	8.12'	16.24'	N10°30'25"E	03°07'01"
C36	25.00'	43.02'	29.06'	37.91'	S40°31'45"W	98°35'48"	C48	378.71'	20.17'	10.09'	20.17'	S10°28'27"W	03°03'05"
C37	45.00'	46.69'	35.69'	44.62'	N20°57'06"E	59°28'30"	C49	378.56'	20.59'	10.30'	20.59'	N10°30'25"E	03°07'01"
C38	45.00'	47.10'	35.95'	44.96'	N80°39'19"E	59°57'56"	C50	298.71'	15.91'	7.96'	15.91'	S10°28'27"W	03°03'05"
C39	45.00'	47.59'	36.29'	45.40'	S39°03'56"E	60°35'34"	C51	30.00'	8.84'	4.45'	8.80'	S08°15'53"W	16°52'28"
C40	45.00'	41.12'	22.12'	39.70'	S17°24'23"W	52°21'04"	C52	30.00'	8.80'	4.43'	8.77'	S08°34'41"E	16°48'40"
C41	45.00'	50.71'	28.43'	48.07'	S75°51'46"W	64°33'42"	C53	30.00'	50.93'	27.92'	48.76'	S29°21'13"E	58°21'44"
C42	45.00'	20.50'	10.43'	20.32'	N58°48'25"W	26°05'57"	C54	50.00'	54.59'	30.37'	51.92'	N89°48'59"W	82°33'08"
C43	25.00'	19.38'	10.21'	18.90'	S67°57'53"E	44°24'55"	C55	155.00'	122.06'	64.39'	116.93'	N81°28'19"E	45°07'05"



PREPARED BY:  
**Clary & Associates, Inc.**  
PROFESSIONAL LAND SURVEYORS  
3830 CROWN POINT ROAD  
JACKSONVILLE, FLORIDA 32257  
(904) 260-2703