

THE WOODS UNIT XIA

A Portion of the Bartolomeo De Castro Y. Ferrer Grant, Section 38, Township 2 South,
Range 28 East, Duval County, Florida.

PLAT BOOK 48 PAGE 62B

SHEET 3 OF 6 SHEETS

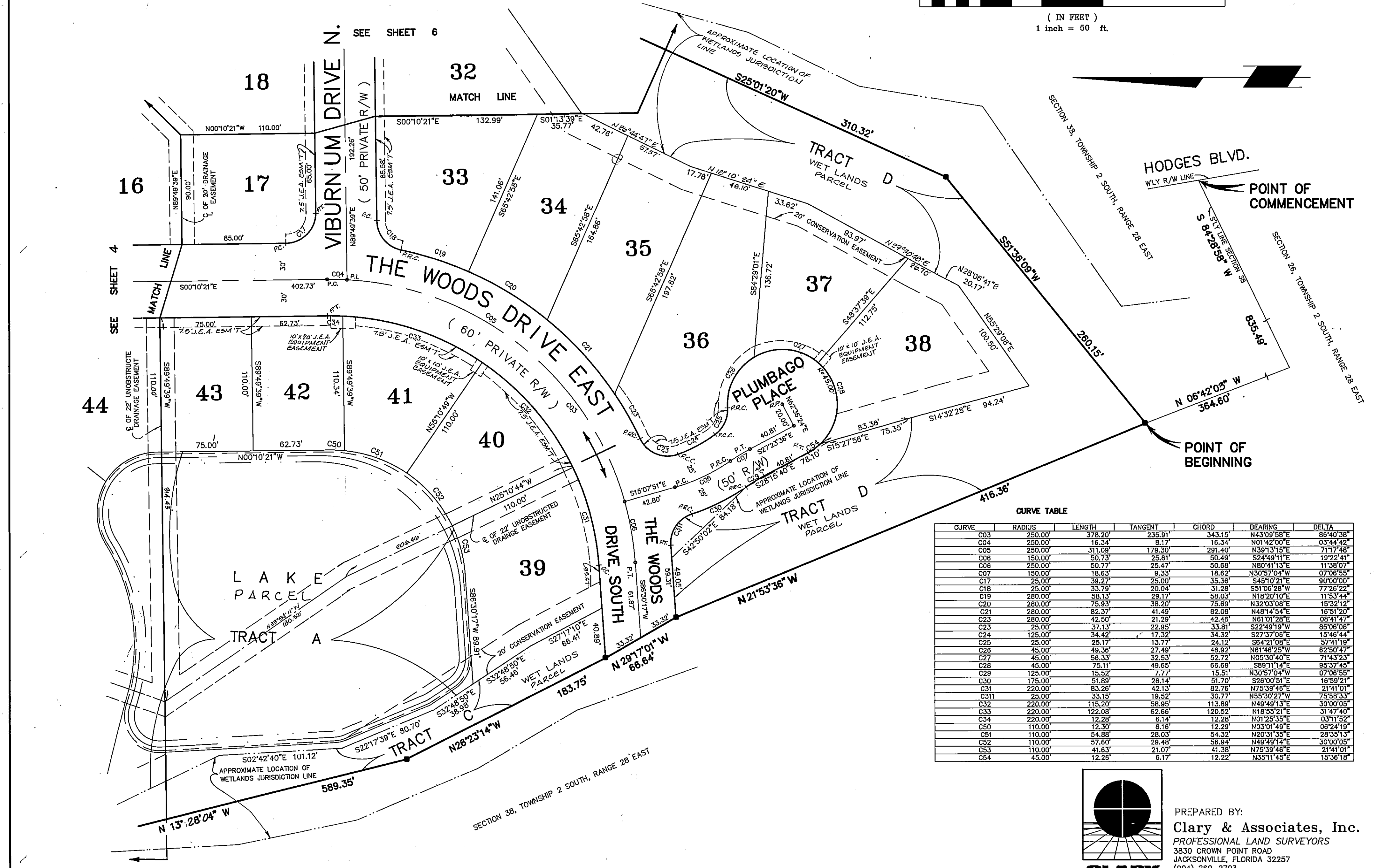
NOTE: SEE SHEET 2 FOR GENERAL NOTES AND LEGEND

GRAPHIC SCALE



(IN FEET)

1 inch = 50 ft.



CURVE TABLE

CURVE	RADIUS	LENGTH	TANGENT	CHORD	BEARING	DELTA
C03	250.00'	378.20'	235.91'	343.15'	N43°09'58"E	86°40'38"
C04	250.00'	16.34'	8.17'	16.34'	N01°42'00"E	03°44'42"
C05	250.00'	311.09'	179.30'	291.40'	N39°13'15"E	71°17'48"
C06	150.00'	50.73'	25.61'	50.49'	S24°49'11"E	19°22'41"
C08	250.00'	50.77'	25.47'	50.68'	N80°41'13"E	11°38'07"
C07	150.00'	18.63'	9.33'	18.62'	N30°57'04"W	07°06'55"
C17	25.00'	39.27'	25.00'	35.36'	S45°10'21"E	90°00'00"
C18	25.00'	33.79'	20.04'	31.28'	S51°06'28"W	77°26'22"
C19	280.00'	58.13'	29.17'	58.03'	N18°20'10"E	11°53'44"
C20	280.00'	75.93'	39.20'	75.69'	N32°03'08"E	15°32'12"
C21	280.00'	82.37'	41.49'	82.08'	N48°14'54"E	18°51'20"
C23	280.00'	42.50'	21.29'	42.46'	N61°01'28"E	08°41'47"
C23	25.00'	37.13'	22.95'	33.81'	S22°49'19"W	85°06'06"
C24	125.00'	34.42'	17.32'	34.32'	S27°37'08"E	15°46'44"
C25	25.00'	25.17'	13.77'	24.12'	S64°21'08"E	57°41'19"
C26	45.00'	49.36'	27.49'	48.92'	N61°46'25"W	62°50'47"
C27	45.00'	56.33'	32.53'	52.72'	N05°30'40"E	71°43'33"
C28	45.00'	75.11'	49.85'	66.69'	S89°11'14"E	96°37'45"
C29	125.00'	15.52'	7.77'	15.51'	N30°57'04"W	07°06'55"
C30	175.00'	51.89'	26.14'	51.70'	S28°00'51"E	16°59'21"
C31	220.00'	83.26'	42.13'	82.76'	N75°39'46"E	21°41'01"
C31	25.00'	33.15'	19.52'	30.77'	N55°30'27"W	70°58'33"
C32	220.00'	115.20'	58.95'	113.69'	N49°49'13"E	30°00'05"
C33	220.00'	122.05'	62.86'	120.52'	N18°55'21"E	31°47'40"
C34	220.00'	12.28'	6.14'	12.28'	N01°25'55"E	03°11'52"
C50	110.00'	12.30'	6.16'	12.29'	N03°01'49"E	06°24'19"
C51	110.00'	54.88'	28.03'	54.32'	N20°31'35"E	28°35'13"
C52	110.00'	57.60'	29.48'	56.94'	N49°49'14"E	30°00'05"
C53	110.00'	41.63'	21.07'	41.38'	N75°39'46"E	21°41'01"
C54	45.00'	12.28'	6.17'	12.22'	N35°11'45"E	15°36'18"



PREPARED BY:
Clary & Associates, Inc.
 PROFESSIONAL LAND SURVEYORS
 3830 CROWN POINT ROAD
 JACKSONVILLE, FLORIDA 32257
 (904) 260-2703