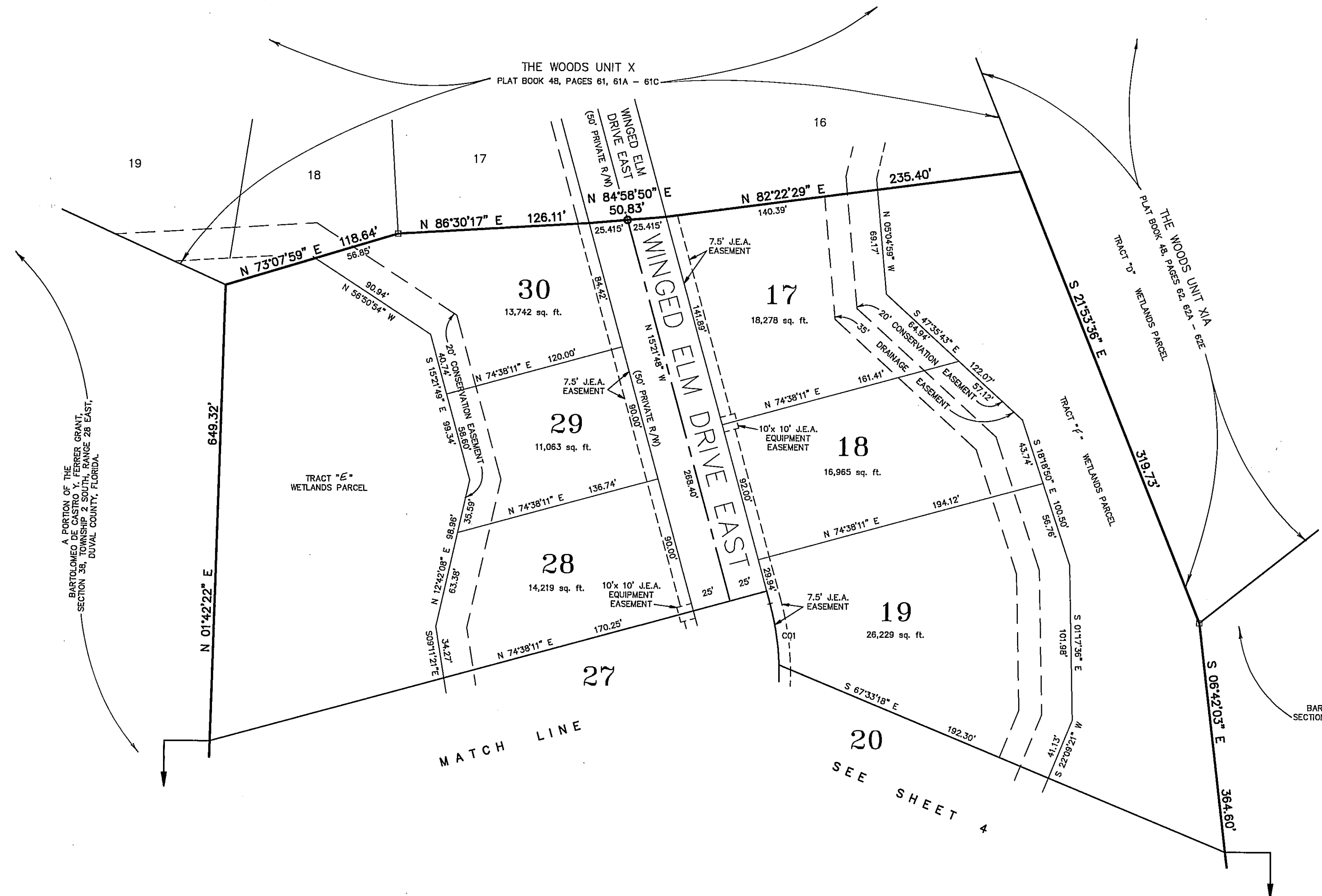


THE WOODS UNIT XB

A Portion of the Bartolomeo De Castro Y. Ferrer Grant, Section 38,
Township 2 South, Range 28 East, Duval County, Florida.

PLAT BOOK 50 PAGE 12B

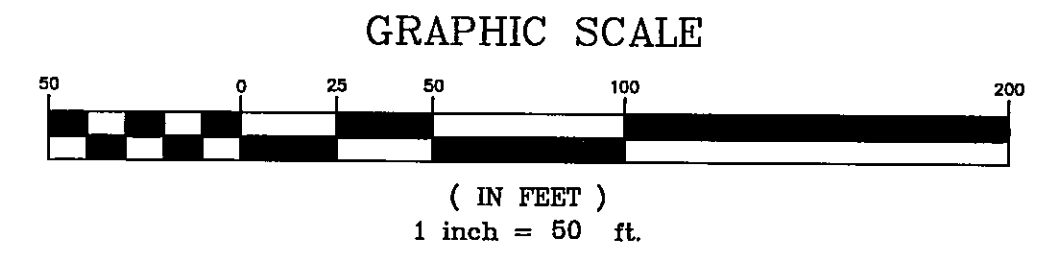
SHEET 3 OF 4 SHEETS
SEE SHEET 2 FOR GENERAL NOTES & LEGEND



A PORTION OF THE
BARTOLOMEO DE CASTRO Y. FERRER GRANT,
SECTION 38, TOWNSHIP 2 SOUTH, RANGE 28 EAST,
DUVAL COUNTY, FLORIDA.

A PORTION OF THE
BARTOLOMEO DE CASTRO Y. FERRER GRANT,
SECTION 38, TOWNSHIP 2 SOUTH, RANGE 28 EAST,
DUVAL COUNTY, FLORIDA.

CURVE	RADIUS	LENGTH	TANGENT	CHORD	BEARING	DELTA
C01	175.00'	40.77'	20.48'	40.68'	N 08°41'20" W	132°05'55"



PREPARED BY:
Clary & Associates, Inc.
PROFESSIONAL LAND SURVEYORS
3830 CROWN POINT ROAD
JACKSONVILLE, FLORIDA 32257
(904) 260-2703