

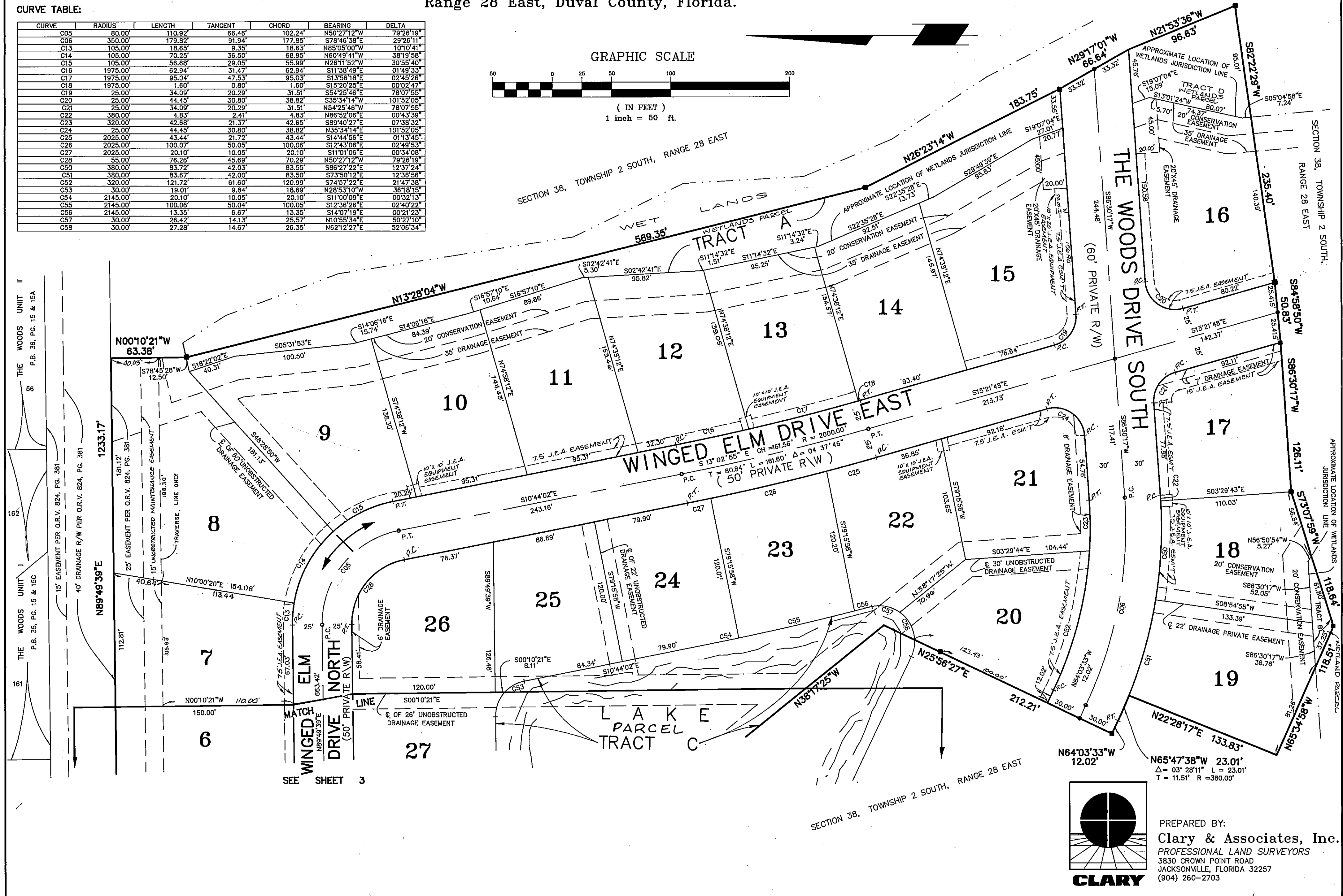
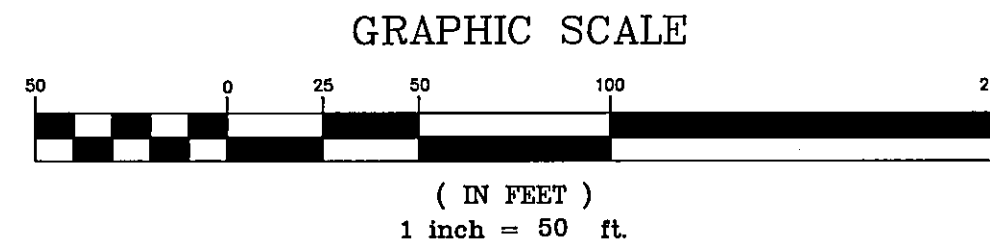
THE WOODS UNIT X

A Portion of the Bartolomeo De Castro Y. Ferrer Grant, Section 38, Township 2 South, Range 28 East, Duval County, Florida.

NOTE: SEE SHEET 2 FOR GENERAL NOTES AND LEGEND

CURVE TABLE:

CURVE	RADIUS	LENGTH	TANGENT	CHORD	BEARING	DELTA
C05	80.00'	110.92'	66.48'	102.24'	N50°27'12"W	79°26'19"
C06	350.00'	179.82'	91.94'	177.85'	S78°46'38"E	29°26'11"
C13	105.00'	18.65'	9.35'	18.63'	N85°05'00"W	10°10'41"
C14	105.00'	70.25'	36.50'	68.95'	N60°49'41"W	38°19'58"
C15	105.00'	56.68'	29.05'	55.99'	N28°11'52"W	30°55'40"
C16	1975.00'	62.94'	31.47'	62.94'	S11°38'49"E	01°49'33"
C17	1975.00'	95.04'	47.53'	95.03'	S13°56'18"E	02°45'26"
C18	1975.00'	1.60'	0.80'	1.60'	S15°20'25"E	00°02'47"
C19	25.00'	34.09'	20.29'	31.51'	S54°25'46"E	78°07'55"
C20	25.00'	44.45'	30.80'	38.82'	S35°34'14"W	101°52'05"
C21	25.00'	34.09'	20.29'	31.51'	N54°25'46"W	78°07'55"
C22	380.00'	4.83'	2.41'	4.83'	N85°52'08"E	00°43'39"
C23	320.00'	42.68'	21.37'	42.65'	S89°40'27"E	07°38'32"
C24	25.00'	44.45'	30.80'	38.82'	N35°34'14"E	101°52'05"
C25	2025.00'	43.44'	21.72'	43.44'	S14°44'56"E	01°13'45"
C26	2025.00'	100.07'	50.03'	100.06'	S12°43'06"E	02°48'53"
C27	2025.00'	20.10'	10.05'	20.10'	S11°01'06"E	00°34'08"
C28	55.00'	76.26'	45.69'	70.29'	N50°27'12"W	79°26'19"
C50	380.00'	83.72'	42.03'	83.55'	S88°27'22"E	12°57'24"
C51	380.00'	83.67'	42.00'	83.50'	S73°50'12"E	12°36'56"
C52	320.00'	121.72'	61.60'	120.99'	S74°57'22"E	21°47'38"
C53	30.00'	19.01'	9.84'	18.89'	N28°53'10"W	36°18'15"
C54	2145.00'	20.10'	10.05'	20.10'	S11°00'09"E	00°32'13"
C55	2145.00'	100.06'	50.04'	100.05'	S12°39'26"E	02°40'22"
C56	2145.00'	13.36'	6.67'	13.35'	S14°07'19"E	00°21'23"
C57	30.00'	28.42'	14.13'	28.57'	N10°55'34"E	50°27'10"
C58	30.00'	27.28'	14.67'	26.35'	N82°12'27"E	52°06'34"



THE WOODS UNIT II
P.B. 36, PG. 15 & 15A
56

THE WOODS UNIT I
P.B. 35, PG. 15 & 15C
161

SEE SHEET 3



PREPARED BY:
Clary & Associates, Inc.
PROFESSIONAL LAND SURVEYORS
3830 CROWN POINT ROAD
JACKSONVILLE, FLORIDA 32257
(904) 260-2703